



Duke Energy Nuclear Programs Update for the South Carolina Governor's Nuclear Advisory Council

Steve Nesbit
Director, Nuclear Policy and Support

October 10, 2013

For Information Purposes Only



Agenda

- Nuclear Fleet Overview
 - Operating
 - New
 - Decommissioning
- 2012 Performance
- Nuclear Leadership
- 2013 Initiatives

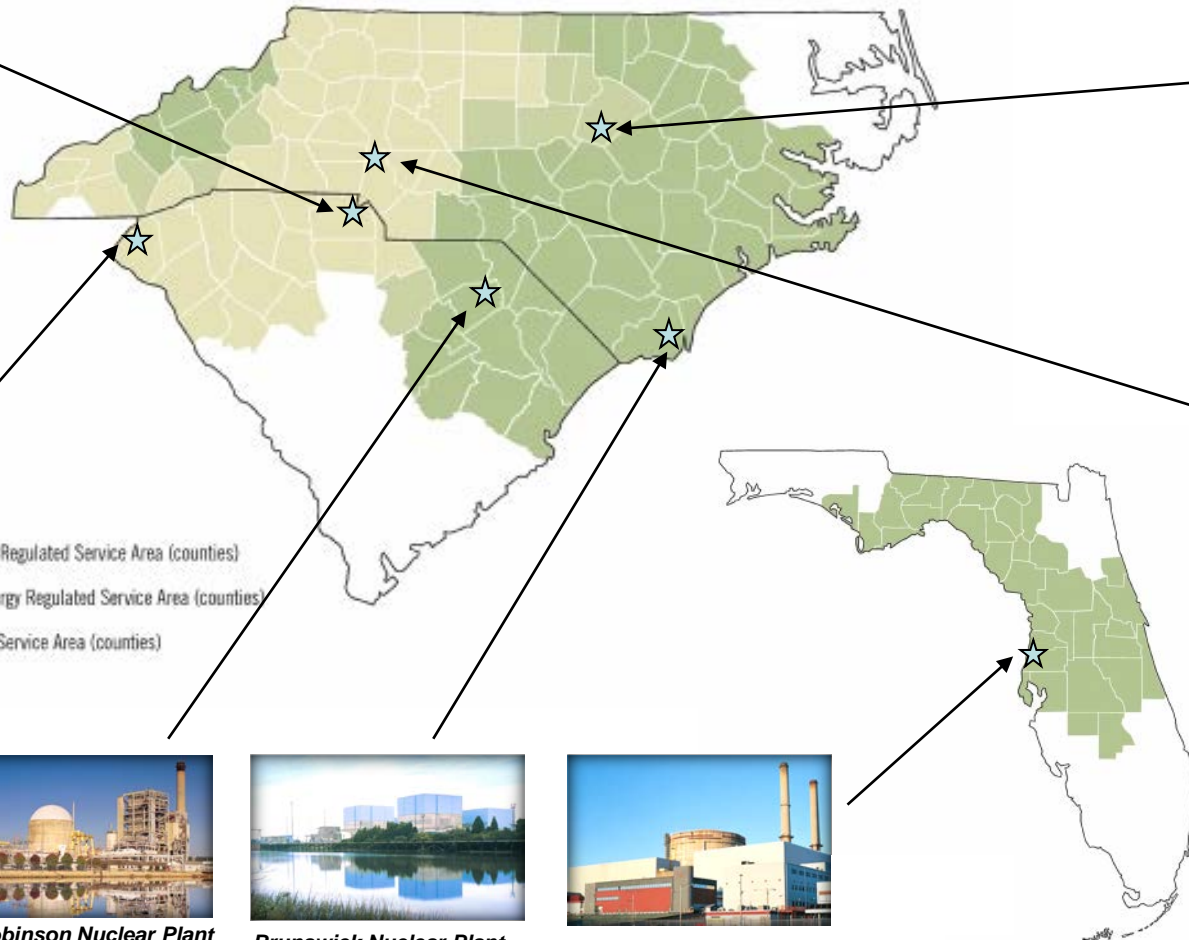
Current Nuclear Fleet



Catawba Nuclear Station
 - Capacity: 2,258 megawatts
 - Location: York, S.C.
 - Number of Units: 2 PWRs
 - Commercial Date: 1985
 - License Expires: 2043



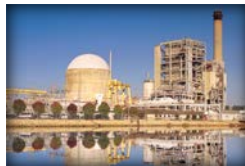
Harris Nuclear Plant
 - Capacity: 930 megawatts
 - Location: New Hill, N.C.
 - Number of Units: 1 PWR
 - Commercial Date: 1987
 - License Expires: 2046



McGuire Nuclear Station
 - Capacity: 2,200 megawatts
 - Location: Huntersville, N.C.
 - Number of Units: 2 PWRs
 - Commercial Date: 1981
 - License Expires: 2041, 2043



Oconee Nuclear Station
 - Capacity: 2,538 megawatts
 - Location: Seneca, S.C.
 - Number of Units: 3 PWRs
 - Commercial Date: 1973
 - License Expires: 2033, 2034



Robinson Nuclear Plant
 - Capacity: 724 megawatts
 - Location: Hartsville, S.C.
 - Number of Units: 1 PWR
 - Commercial Date: 1971
 - License Expires: 2030



Brunswick Nuclear Plant
 - Capacity: 1,875 megawatts
 - Location: Southport, N.C.
 - Number of Units: 2 BWRs
 - Commercial Date: 1975
 - License Expires: 2036, 2034



Crystal River Nuclear Plant
 - Location: Crystal River, Fla.
 - Number of Units: 1 PWR
 - Retirement announced 2/5/13



"One Team, One Fleet, One Company"

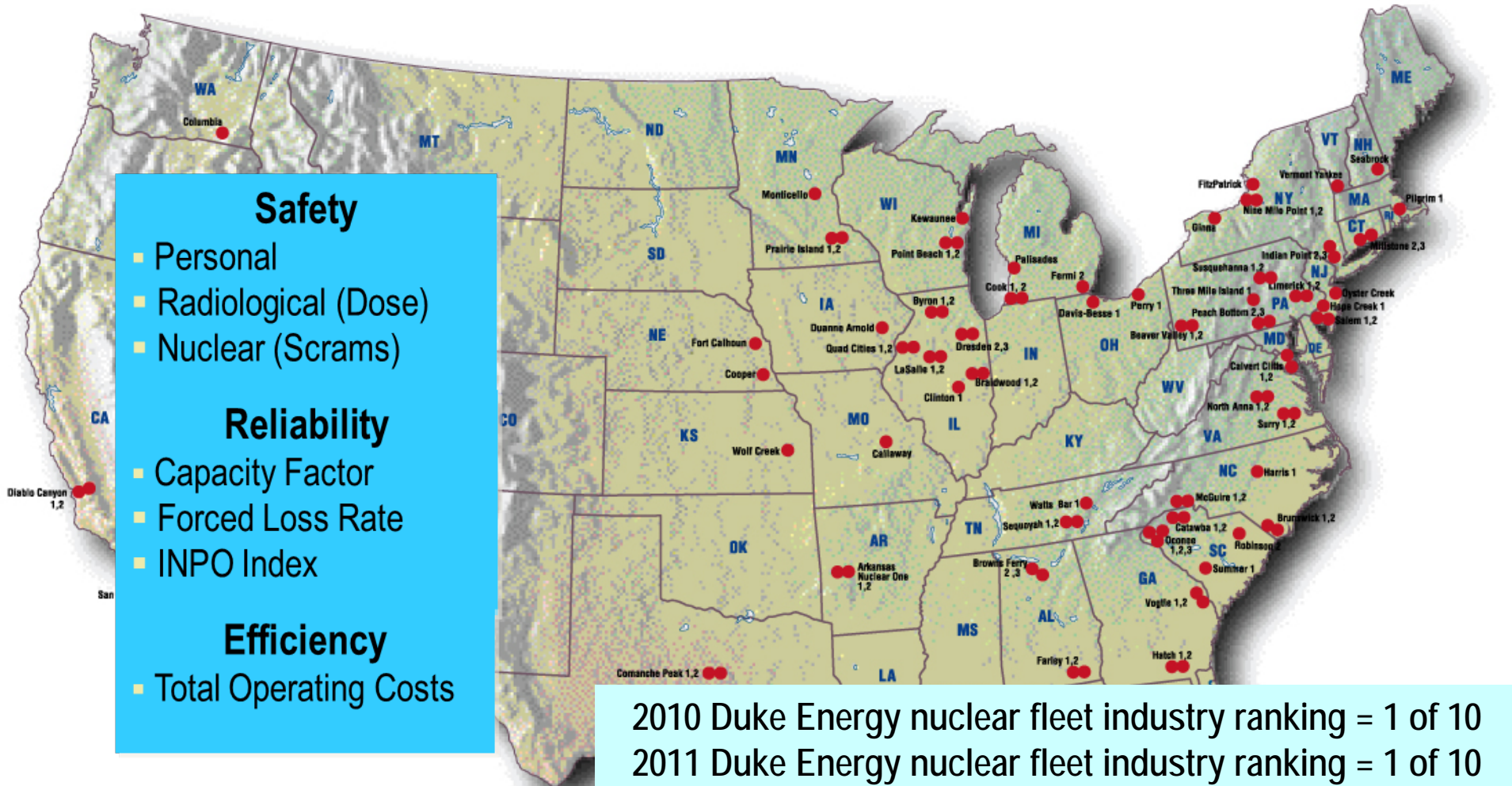
New Plants

- Maintain new nuclear as an option for future capacity
 - Combined construction and operating license applications
 - Lee (two AP1000 units near Gaffney, South Carolina)
 - Levy (two AP1000 units in Levy County, Florida)
 - Suspended application review for Harris Nuclear Plant Units 2 and 3
 - Exploring regional generation partnership opportunities
- Licensing challenges
 - Waste Confidence
 - Central and Eastern United States seismic impacts

Crystal River Unit 3

- Delamination of concrete in a sector of the containment shield building in 2009 during steam generator replacement activities
 - Damage repaired but subsequent delaminations occurred in two other sectors in 2011
 - February 2013 decision to retire unit rather than repair it
- Plant will be maintained in SAFSTOR until decommissioning

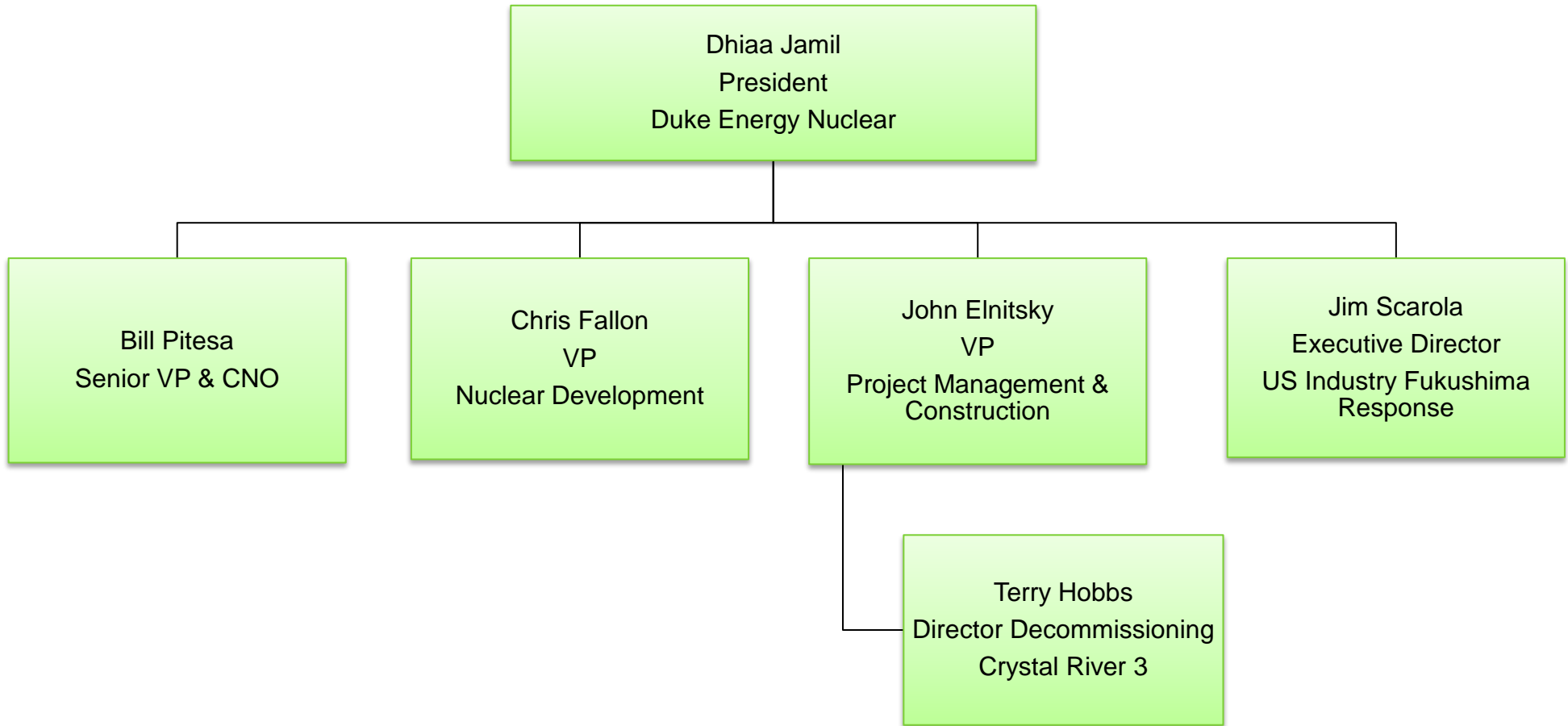
Nuclear Fleet – Key Performance Indicators



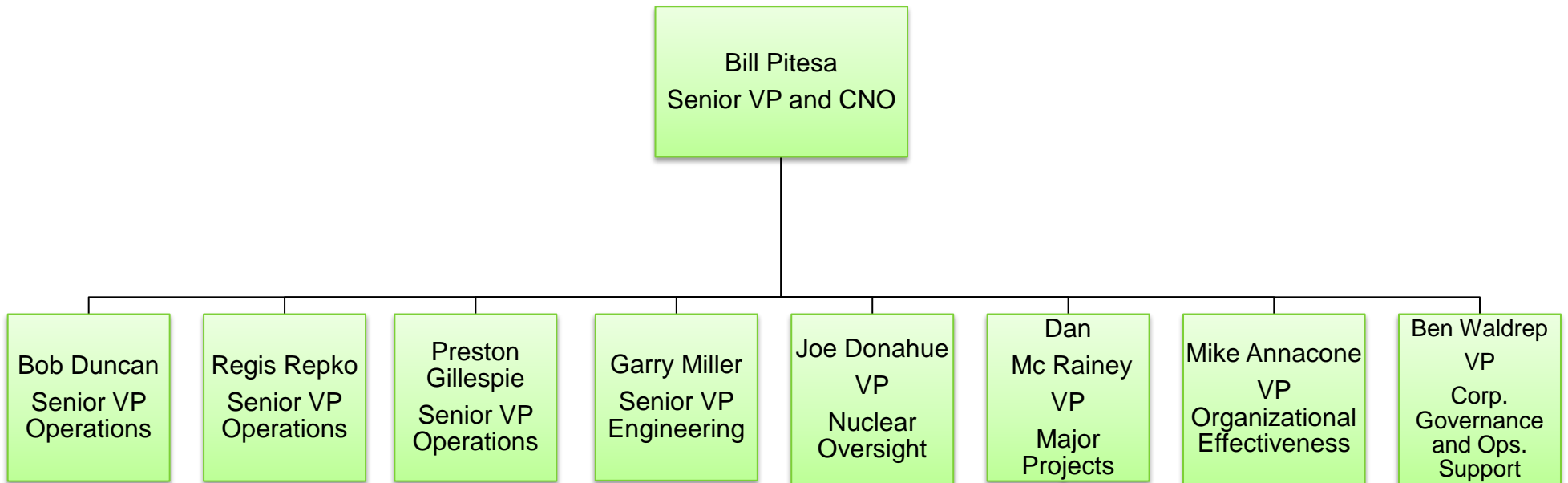
2012 Generation Highlights

- Fleet capacity factor of 90.35 percent
 - 14th year of fleet capacity factor greater than 90 percent (excluding Crystal River 3 in 2010-2012)
 - Exceeded U.S. industry average for past 12 years
- Harris completed first ever breaker-to-breaker run in Spring 2012 (525 days)
- Brunswick Unit 2 set annual net generation record of 7,987,810 megawatt-hours
- McGuire Unit 2 completed a 528 day breaker-to-breaker run in Fall 2012 (best ever for station)

Nuclear Leadership



Nuclear Leadership



2013 Fleet Initiatives

- Fleet Excellence
 - Outage execution
 - Regulatory excellence
 - Engineering technical rigor
 - Organizational effectiveness excellence
 - Major Projects excellence
- Fleet Integration
 - Fleet process and organizational alignment
 - Asset suite implementation