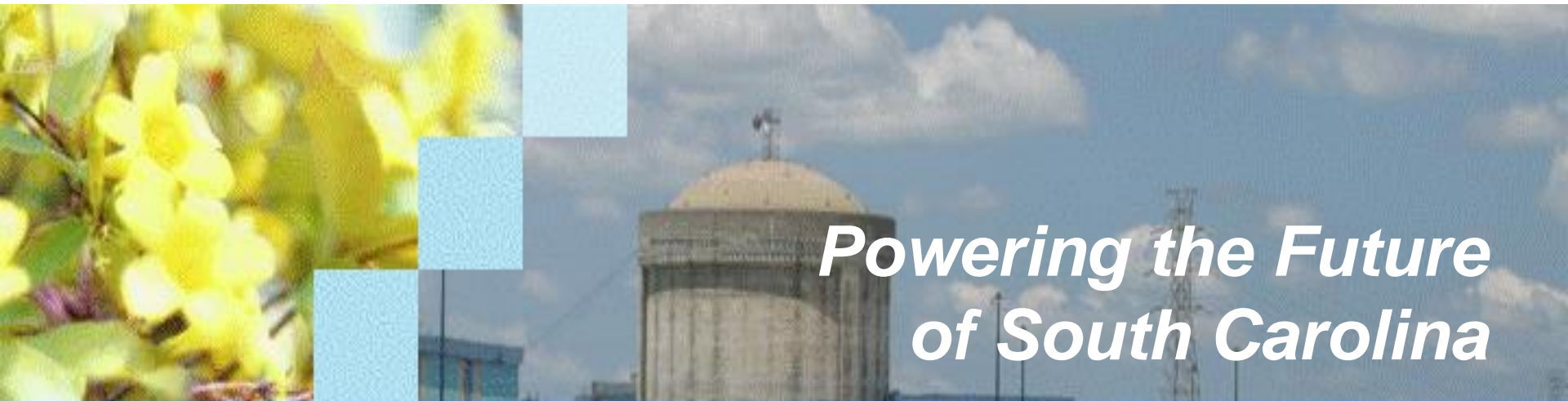


New Nuclear Update



*Powering the Future
of South Carolina*

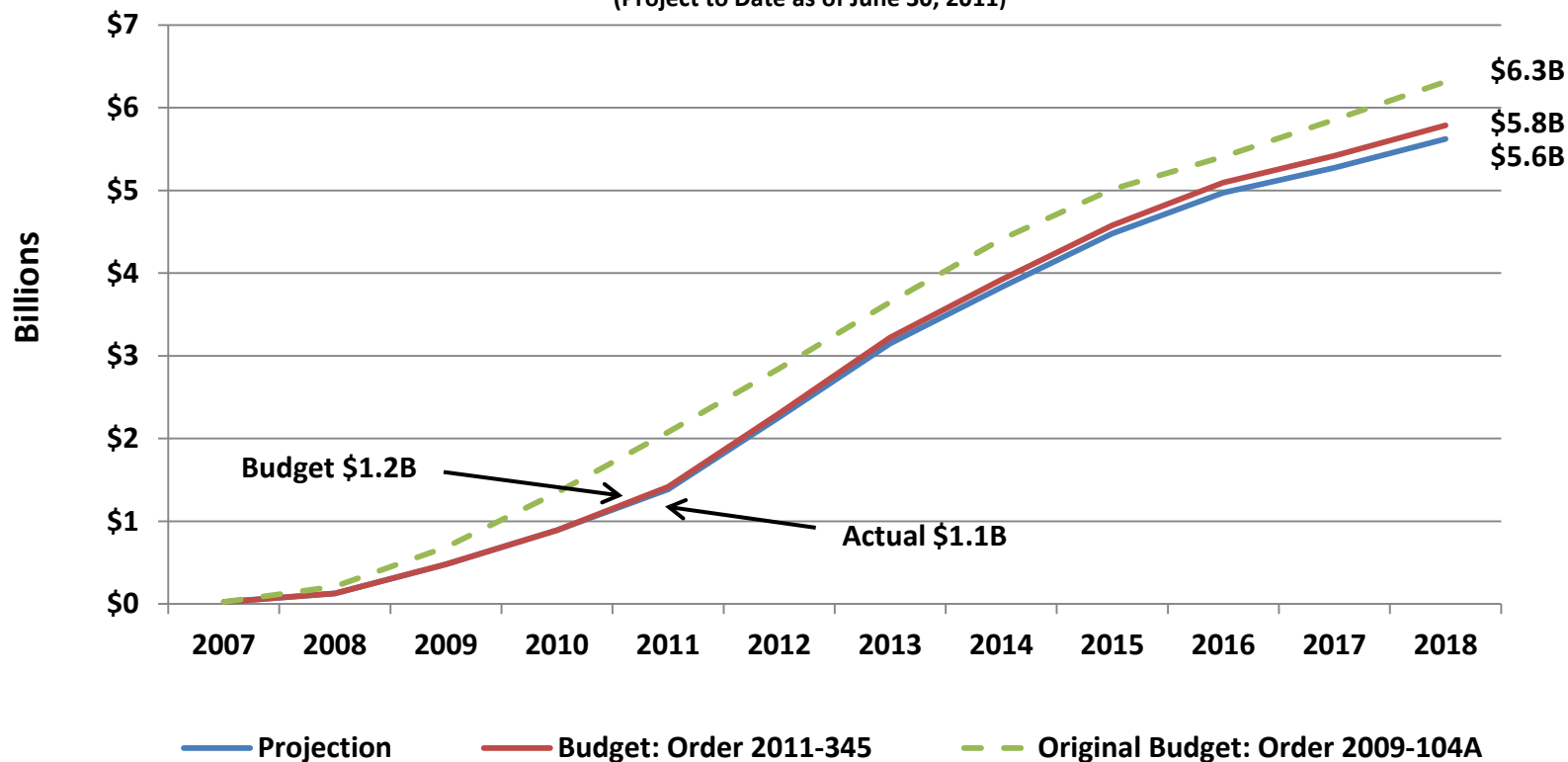


Budget Status

SCE&G's 55% Share of Total Project Costs

(Includes AFUDC, Transmission and Escalation)

(Project to Date as of June 30, 2011)



AS OF 6/30/11:

- The total projected cost of \$5.6B is \$166M under the current project budget of \$5.8B
- The total projected cost of \$5.6B is \$693M under the originally approved budget of \$6.3B

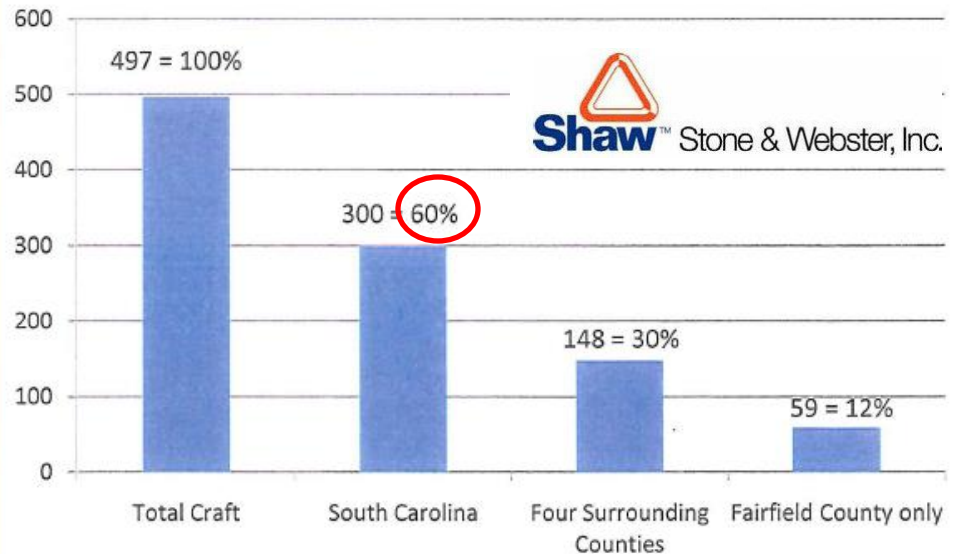
Craft and Sub Demographics

August 2011

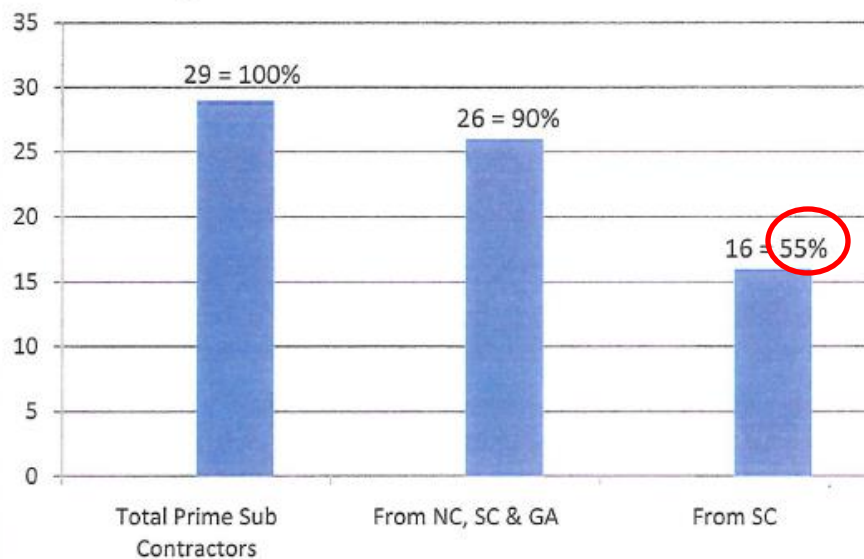
By Count & Percent of Total

Four Surrounding SC counties:
Fairfield, Lexington, Richland, Newberry Counties

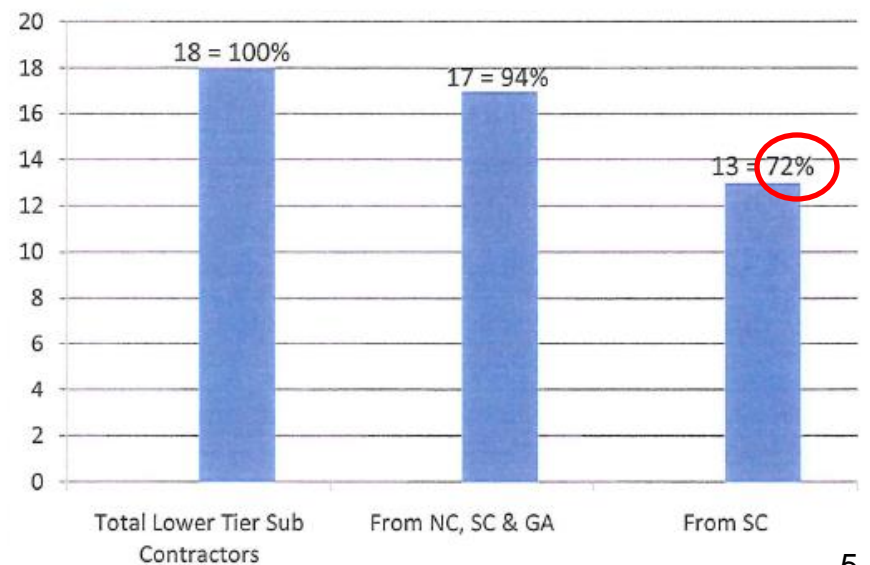
August 2011 Craft Demographics



August 2011 Prime Sub Contracts



August 2011 Lower Tier Sub Contractors



Fukushima 90 day Report

- Industry issued “The Way Forward” June 8th
<http://safetyfirst.nei.org/>
- NRC issued 90 day report July 12th .
<http://pbadupws.nrc.gov/docs/ML1118/ML111861807.pdf>
- Chairman National Press Club briefing July 18th
- NRC Commission briefing July 19th
- NRC held 4 hour public meeting July 28th
- NRC voted on path forward



U.S. Industry Leadership in Response to Events at the Fukushima Daiichi Nuclear Power Plant

90 Day Report

- Focus of recommendations
 - seismic and flooding protection
 - SBO protection
 - severe accident mitigation
- **“[T]he Task Force concludes that continued operation and continued licensing activities do not pose an imminent risk to the public health and safety and are not inimical to the common defense and security.”**
- Recommends proceeding with AP1000 licensing

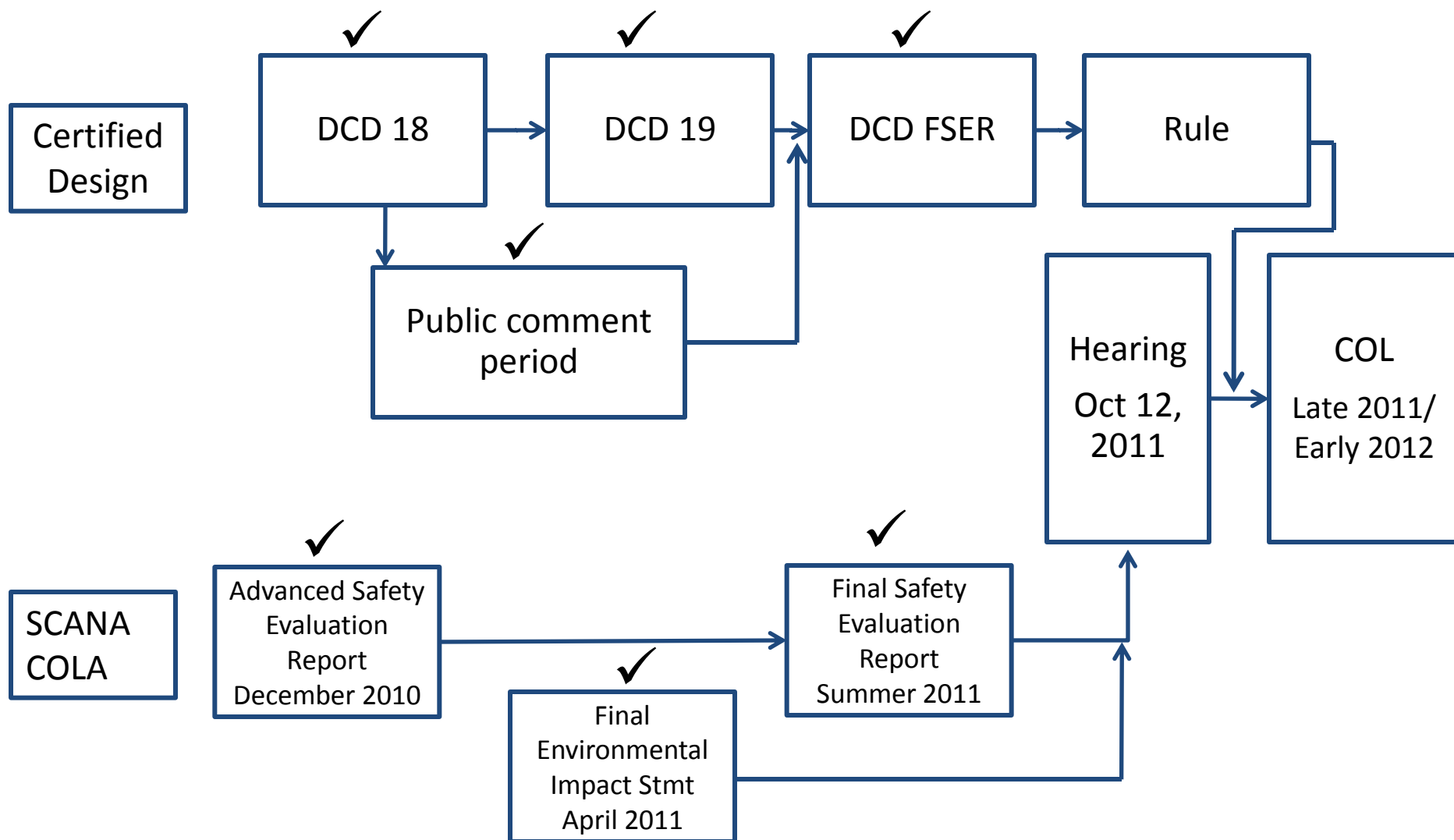
Applicability and Implementation

Strategy for New Reactors

- The Task Force notes that the two design certifications currently in the rulemaking process (i.e., the AP1000 and the economic simplified boiling-water reactor (ESBWR)) have passive safety systems. By nature of their passive designs and inherent 72-hour coping capability for core, containment, and spent fuel pool cooling with no operator action required, the ESBWR and **AP1000** designs have many of the design features and attributes necessary to address the Task Force recommendations. **The Task Force supports completing those design certification rulemaking activities without delay.**

COL/NRC Update

Parallel Path Chart



- Nuclear Regulatory Commission's ("NRC") licensing process continues
- To date, all interveners' challenges to SCE&G's COL application have been denied by Atomic Safety Licensing Board and NRC

China Update

Sanmen Site June 2011



China Still Constructing

- SCE&G trip in June
 - Sanmen
 - Haiyang
 - Module facility
 - WEC Beijing office

- No slow down at construction sites

- Not starting at Greenfield sites or future reactors at existing sites



Yes They Need Nuclear

Forbidden City Beijing June 2011, 2:00 pm



NRC Commissioners

- Commissioner Ostendorff reconfirmed
- Commissioner Svinicki term expires 6/30/12
- Appears we will have a full commission for our COLA hearing



Santee Cooper Ownership

- Desire to reduce ownership interest
- Still committed to project
- Current potential partners
 - Orlando Utility Commission
 - Duke Energy
 - Florida Municipal Power Authority
- In general looking to negotiate PPA followed by ownership decision

Nuclear Supply Chain

Suppliers



Doosan & Mangiarotti Manufactured Equipment

Steam Generators

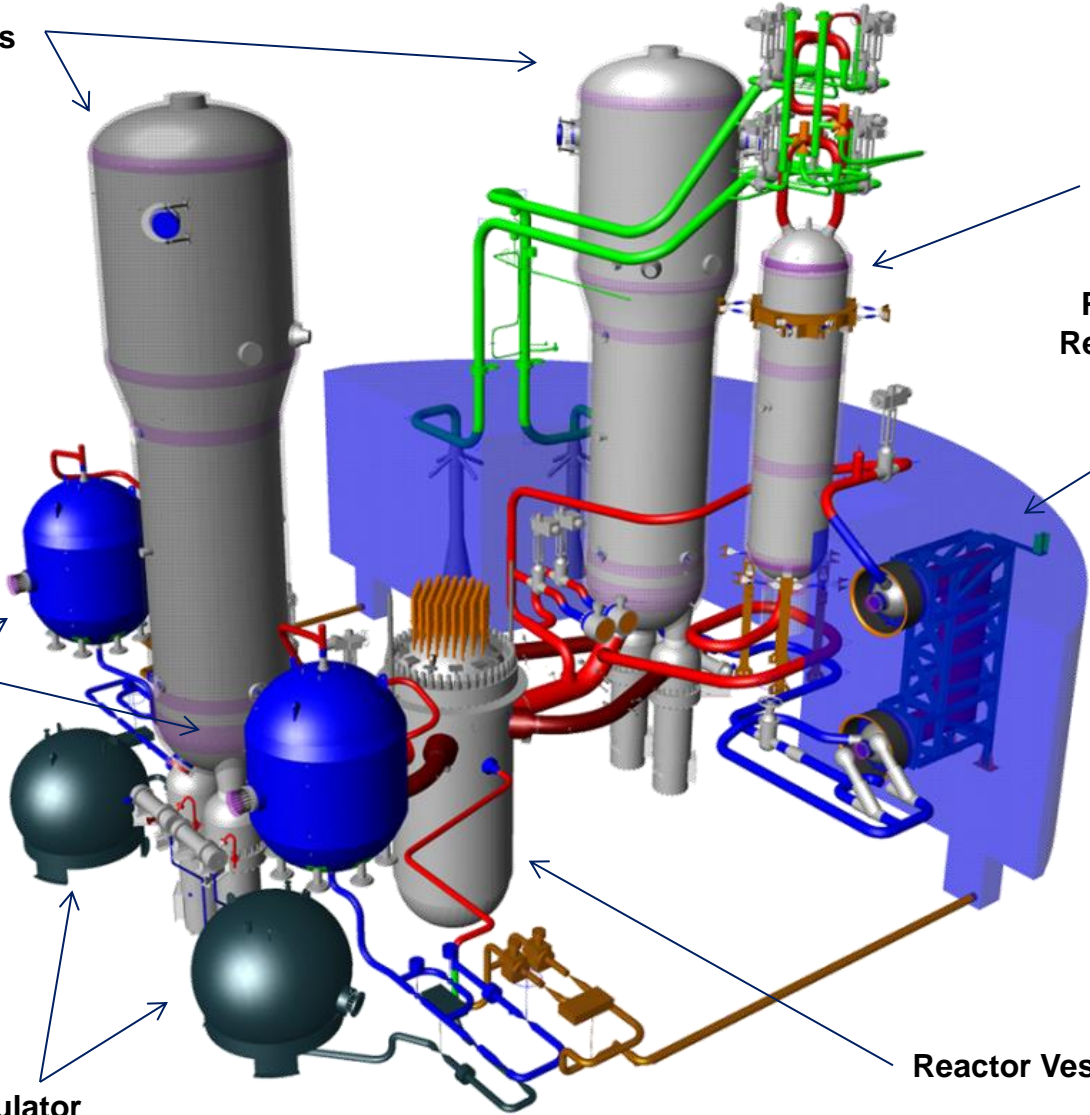
Pressurizer

Passive Residual Heat
Removal Heat Exchanger

Core Makeup
Tanks

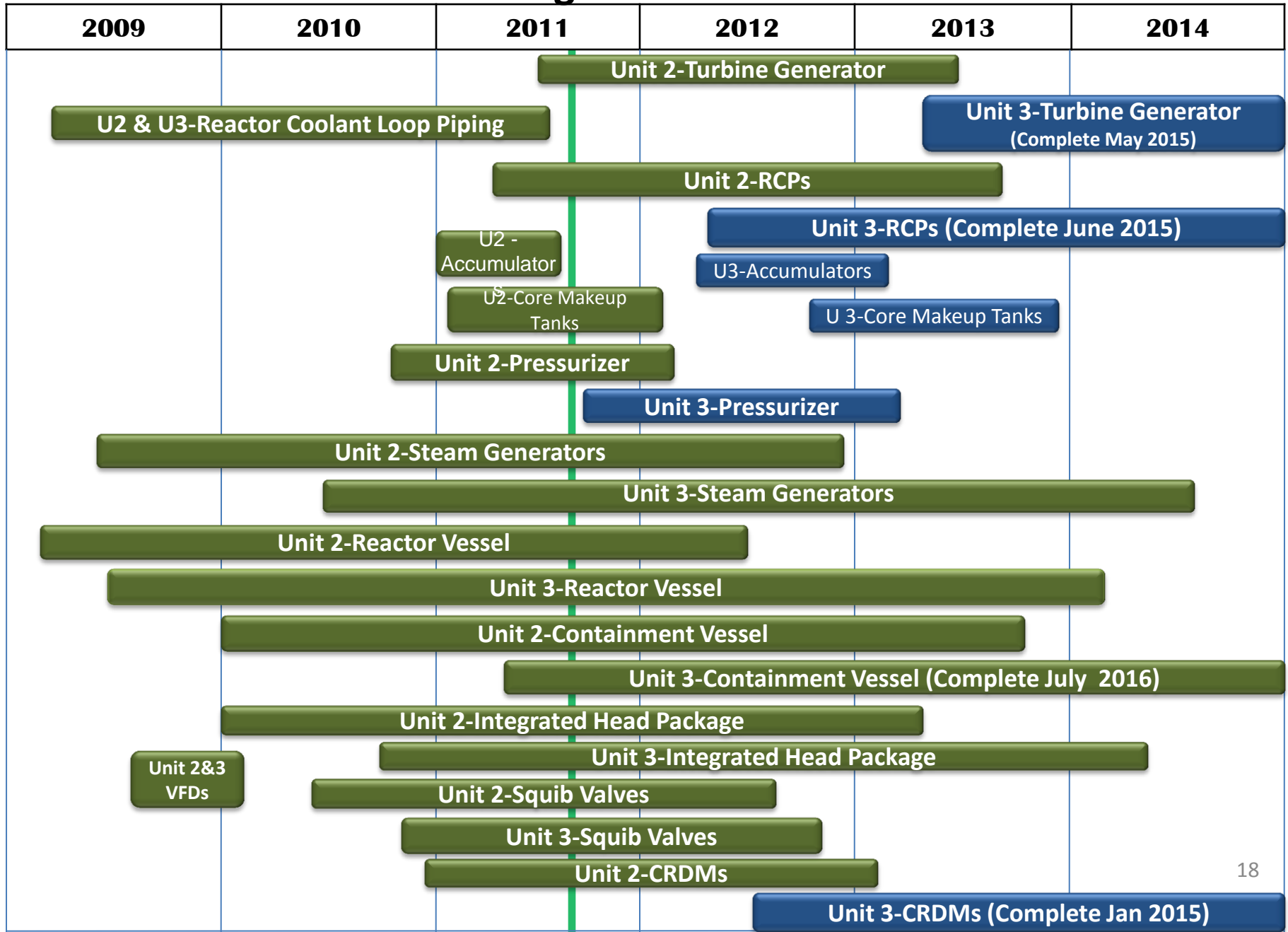
Accumulator
Tanks

Reactor Vessel



- Only two vendors in Japan reportedly impacted by the earthquake
- IHI – Fabricate large containment vessel plates
 - Very little damage to facility
 - No damage to our parts
 - Adapting workforce to scheduled power blackouts
- Toshiba – Turbine Generators
 - Similar issues with rolling blackouts
- Force Majeure considerations

Manufacturing Schedule



Construction Overview

Current Status

- Safety Performance 3 Million Safe Man-hours
 - No lost time accidents YTD 0 PTD 1
 - OSHA recordable YTD 1 PTD 5
 - First aid cases YTD 39 PTD 91
 - Near misses YTD 29 PTD 90
 - Vehicle accidents YTD 7 PTD 27

January 2011- Aerial View

Switchyard



CV Area



Unit 2



Unit 3



Office building



Module Assembly Building



Batch Plants



Unit 2 Power Block Excavation

CWS Outside Turbine Bldg



Dental Concrete Area Preparation

07/28/2011 02:34 PM

Unit 3 Power Block Excavation

CWS Outside
Turbine Bldg

Rock

Rock



08/01/2011 02:21 PM

Cooling Tower Basins



Rebar is "tied" to piles

2A Cooling Tower



07/19/2011 11:45

Unit 2 CWS to Cooling Tower 2A Excavation



08/01/2011 01:01 PM

Unit 2 CWS Turbine Building



08/16/2011 04:18 PM



**Containment vessel (CV)
steel plate delivery from
Charleston**

19 2:03PM

CB&I Containment Ring Laydown Area



5/06/2011

CB&I Containment Ring Fab Area



6/06/2011

CV Stub Column with Studs





↑
↗
Columns



CV steel plate
positioning for
welding

CV Lower Bowl Assembly September 2011



BIGGE Heavy Lift Derrick (HLD)

Pendant
lines

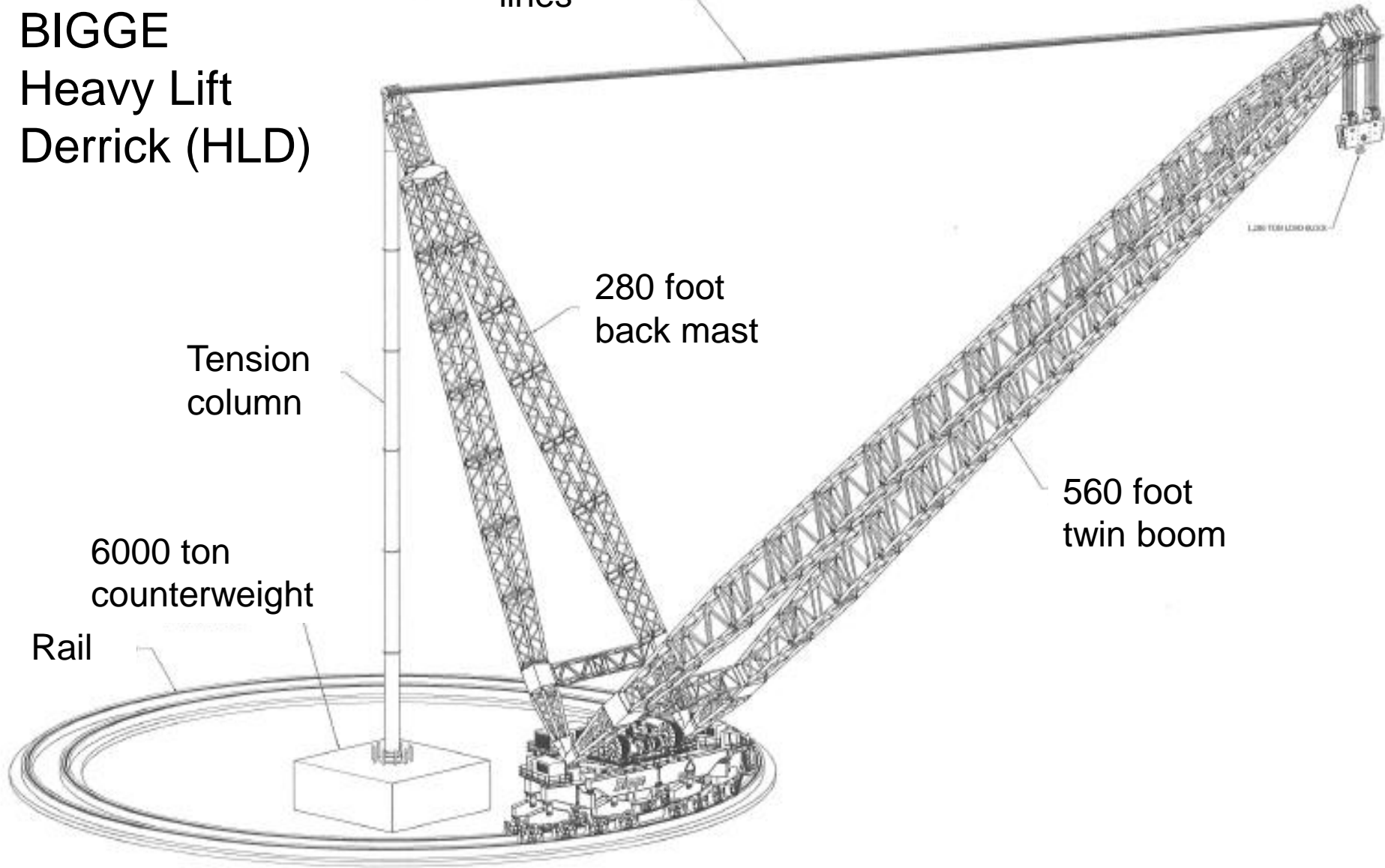
280 foot
back mast

Tension
column

6000 ton
counterweight

Rail

560 foot
twin boom



HLD



07/07/2011 02:48 PM

Heavy Lift Derrick



25 9:25AM

Construction Field Office – Building #9



17 9:27AM

Batch Plant



08/09/2011 09:01 AM

Electrical Switchyard “A” Frames



08/09/2011 07:52 AM

Module Assembly Building or MAB



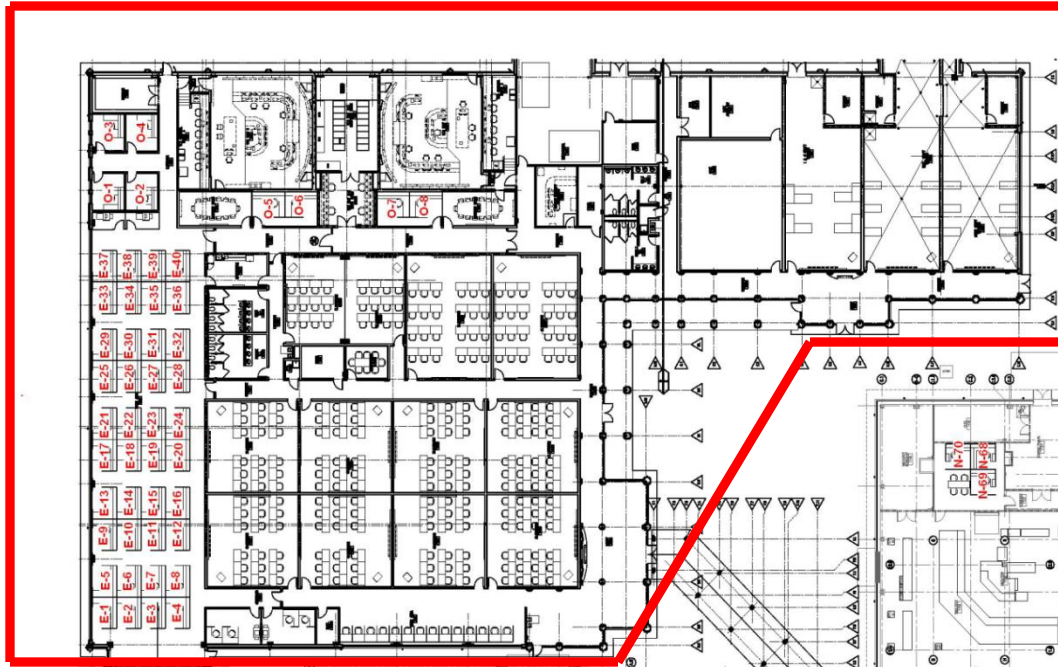
08/16/2011 04:18 PM

Inside MAB

**CA 20
Platen**



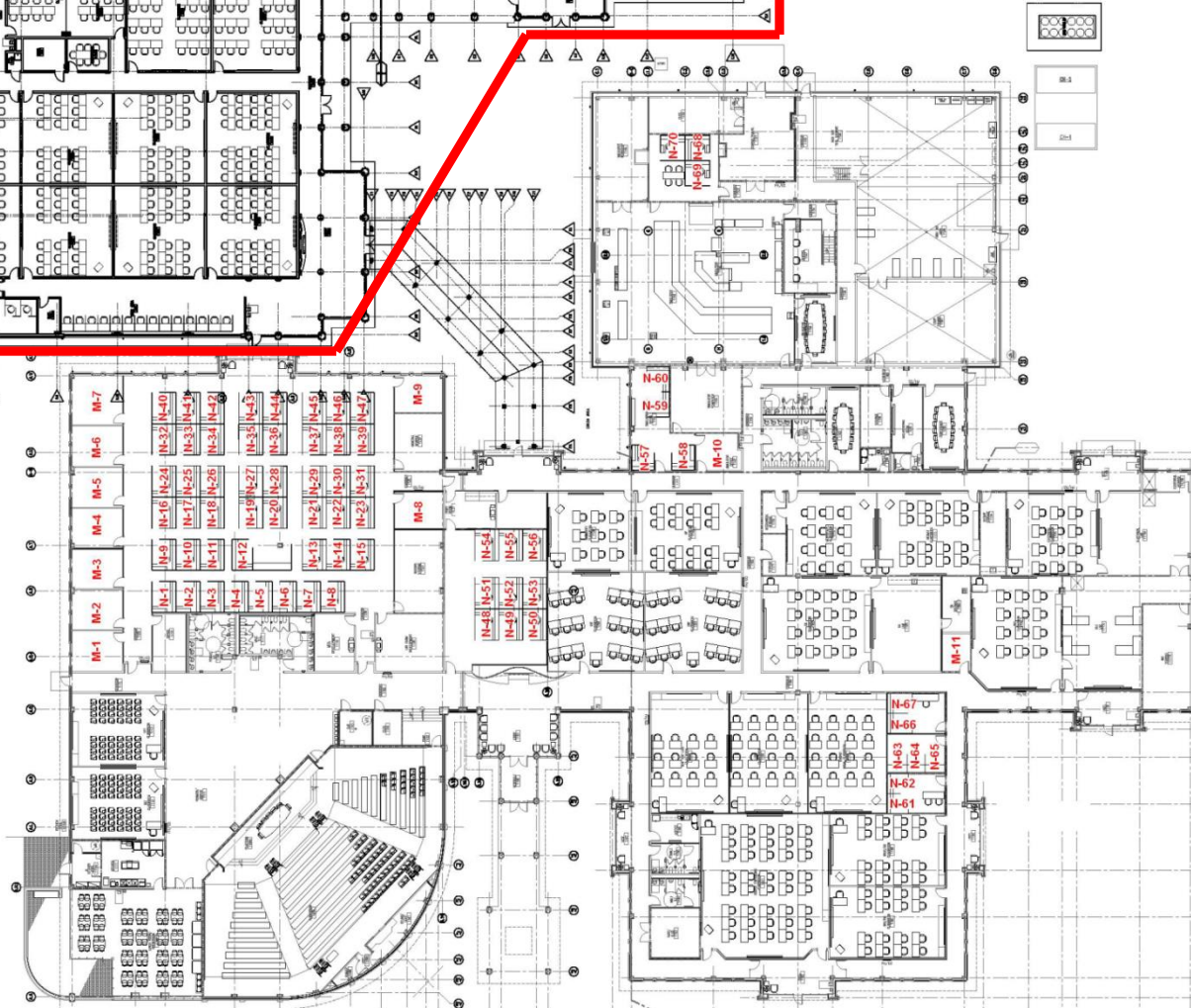
08/16/2011



~45,000 sq ft addition
to ~75,000 existing
Total 120,000 sq ft

Completed
December 2010

Occupied January
2011



New training addition



Existing Training Facility





Chinese Job Shadow Program Participants

**Hosted 20 participants
10 in late 2010
10 in early 2011**



- Construction is on schedule for 2016/2019
- Evaluating COL issue date with consortium
- DCD process at the NRC is proceeding
- Westinghouse received Final Safety Evaluation Report (FSER) for AP1000 DCD
- VCS 2&3 received Final Environmental Impact Statement (FEIS) & FSER
- COLA mandatory hearing October 12, 2011
- COL expected in Late 2011/Early 2012
- Supply chain in Japan experienced little damage