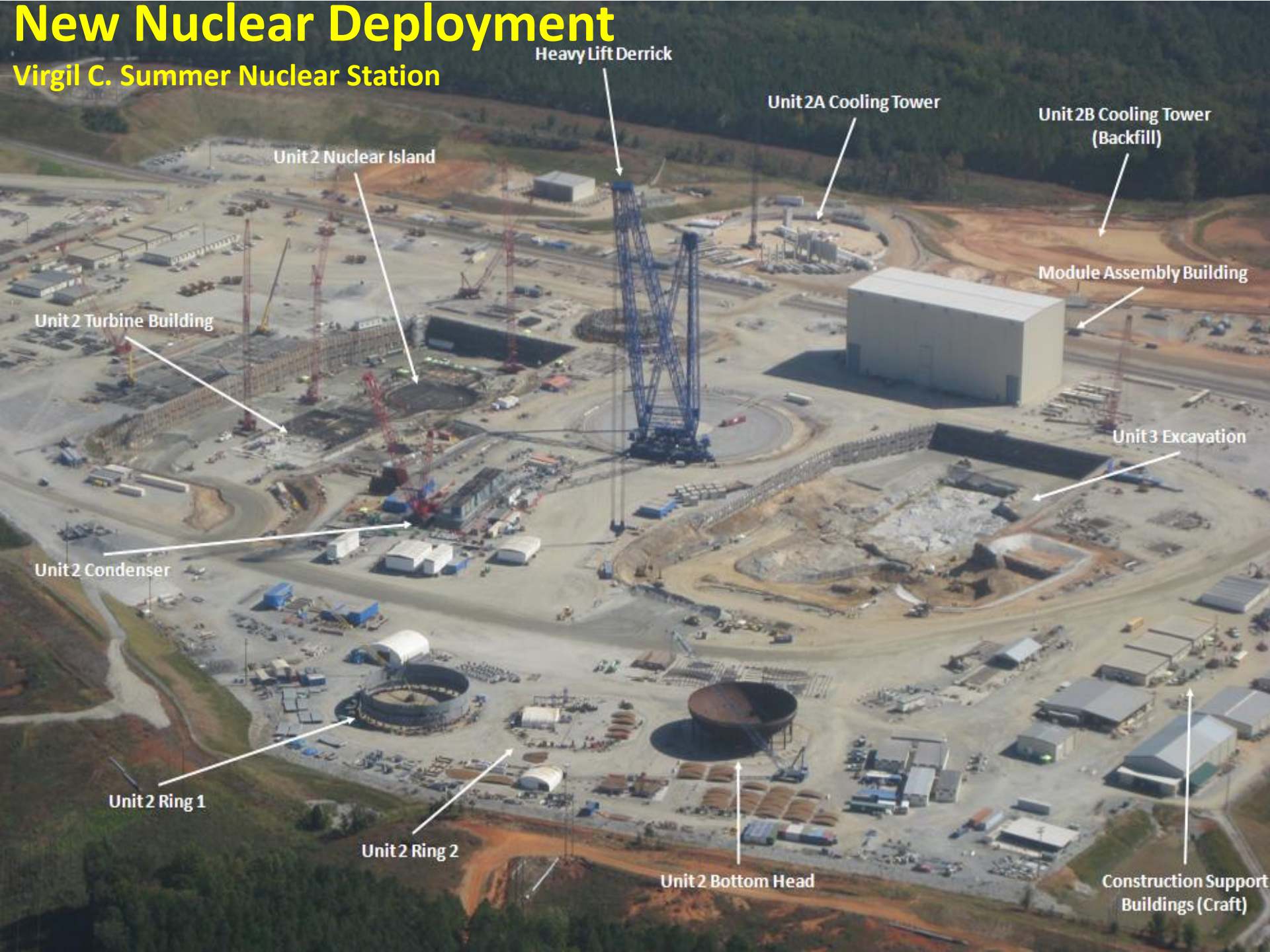


New Nuclear Deployment

Virgil C. Summer Nuclear Station



Heavy Lift Derrick

Unit 2A Cooling Tower

Unit 2B Cooling Tower (Backfill)

Unit 2 Nuclear Island

Module Assembly Building

Unit 2 Turbine Building

Unit 3 Excavation

Unit 2 Condenser

Unit 2 Ring 1

Unit 2 Ring 2

Unit 2 Bottom Head

Construction Support Buildings (Craft)

Activities at the Site

- Worlds largest derrick (crane) in use
- Training on simulators
- Completed CV lower bowl
- Welding U2 CV rings
- Switchyard – energized
- Receiving CA-20 submodules
- Erecting cooling towers
- Assembling condensers
- Poured >30,000 cu yds NSR concrete per unit
- Poured U2 turbine bldg basemat
- Placing U3 mud mat
- Unit 2 FNC complete



Construction 2012 Milestones

- Second Quarter
 - Set CR-10
 - Module welding continues
 - Install unit 3 water proof membrane

- Third & Fourth Quarter
 - Set Unit 2 Lower containment Vessel head
 - Set CA-20
 - Pour unit 3 basemat

Other NND Stuff

- Received NPDES permit
- Ops initial Accreditation by NANT
- CB&I acquires Shaw
- Toshiba now 87% owner of Westinghouse
- Westinghouse new CEO Danny Roderick
- Initial licensed operator class started
- Duke still involved with Santee on ownership

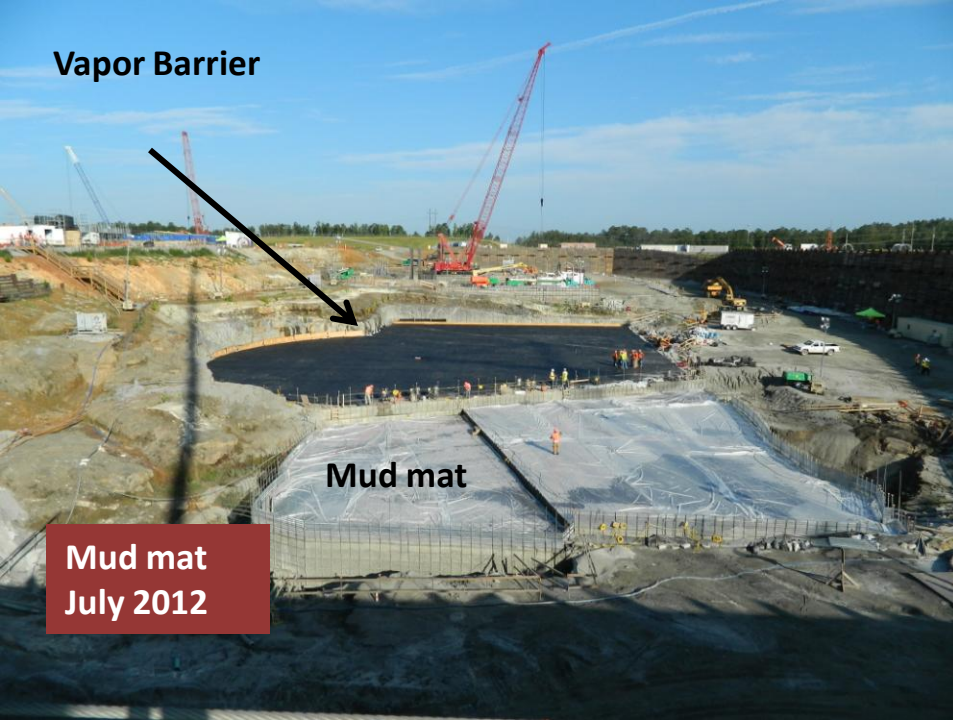
| Unit 2 Nuclear Island



**Forming- No
Concrete placed
March 2012**



**Dental Concrete
April 2012**



Vapor Barrier

Mud mat

**Mud mat
July 2012**



**Rebar Cage
February 2013**



Unit 2 NI Basemat South End 2/9/2013

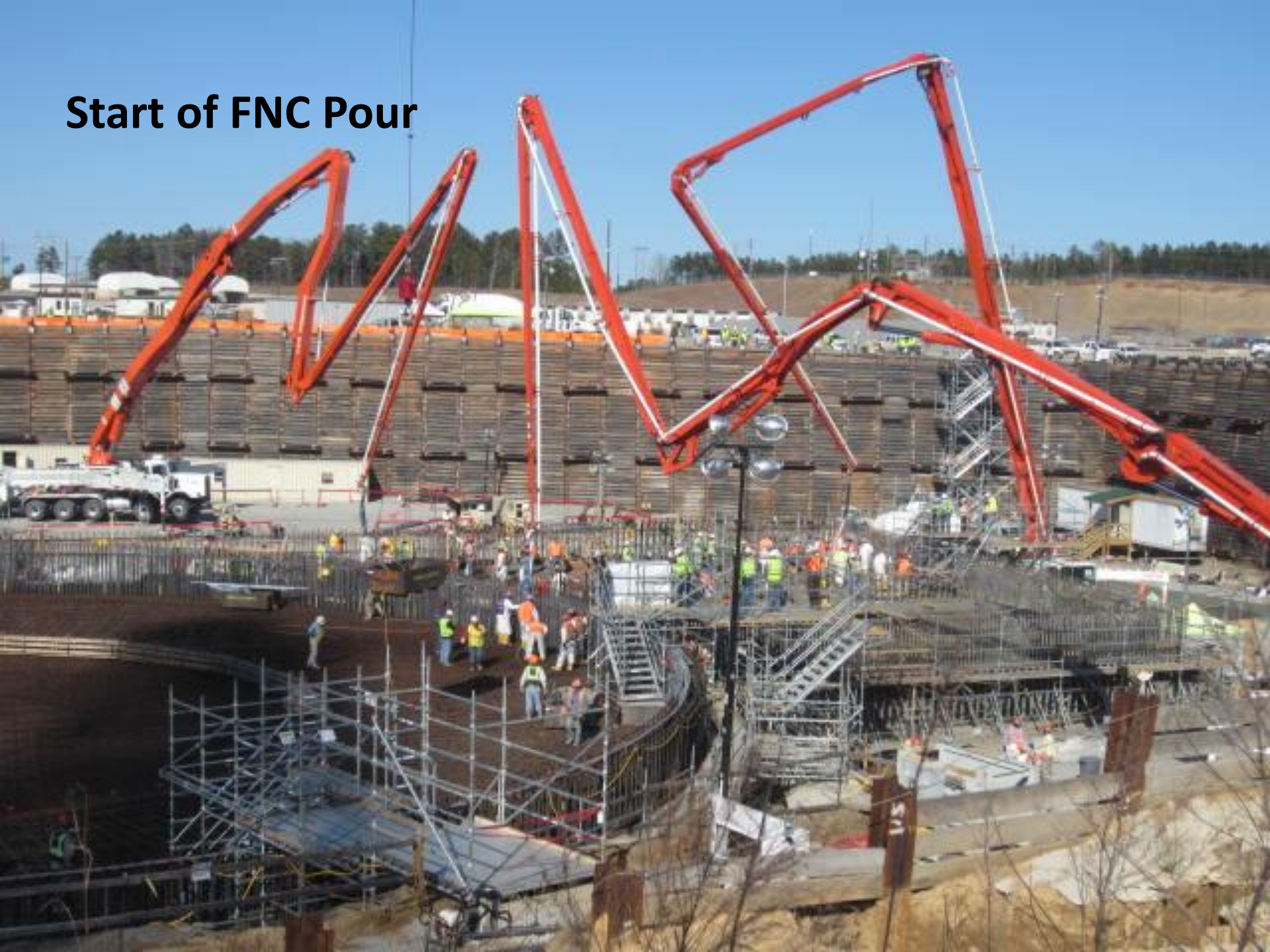


Unit 2 NI Shield Building 12/7/12



Unit 2 NI Basemat North End 2/9/13

Start of FNC Pour





Concrete Pumper



The Whole 9 Yards



CV Area



**Poured for 50+
Consecutive Hours**



Nearing End of FNC Pour

Turbine Building

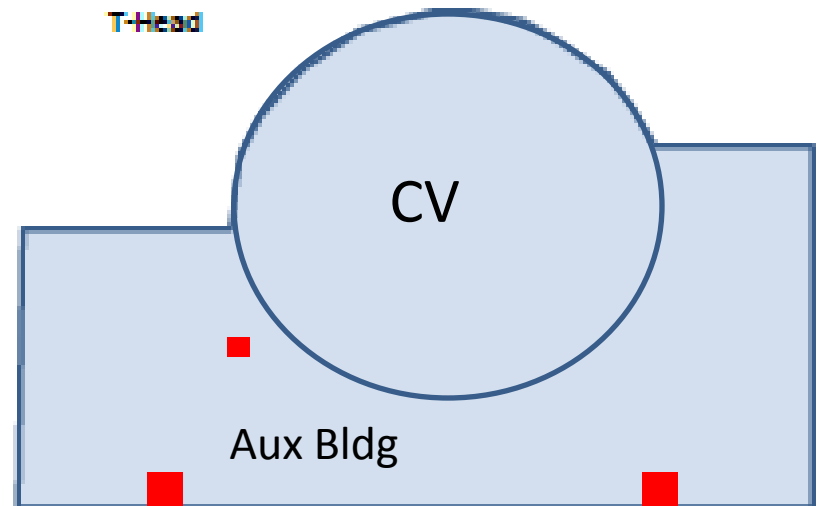
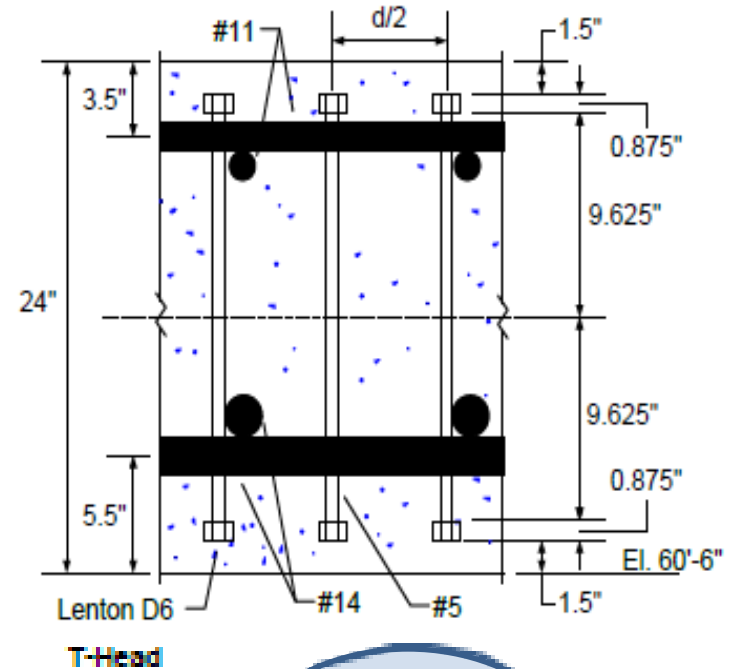




Unit 3 Nuclear Island 1/31/2013

NI Basemat Issue

- One sump & two elevator sumps require additional 6" rebar
- Adds little concrete to 6800 cubic foot basemat.
- < 1% of 32,000 sq ft surface affected

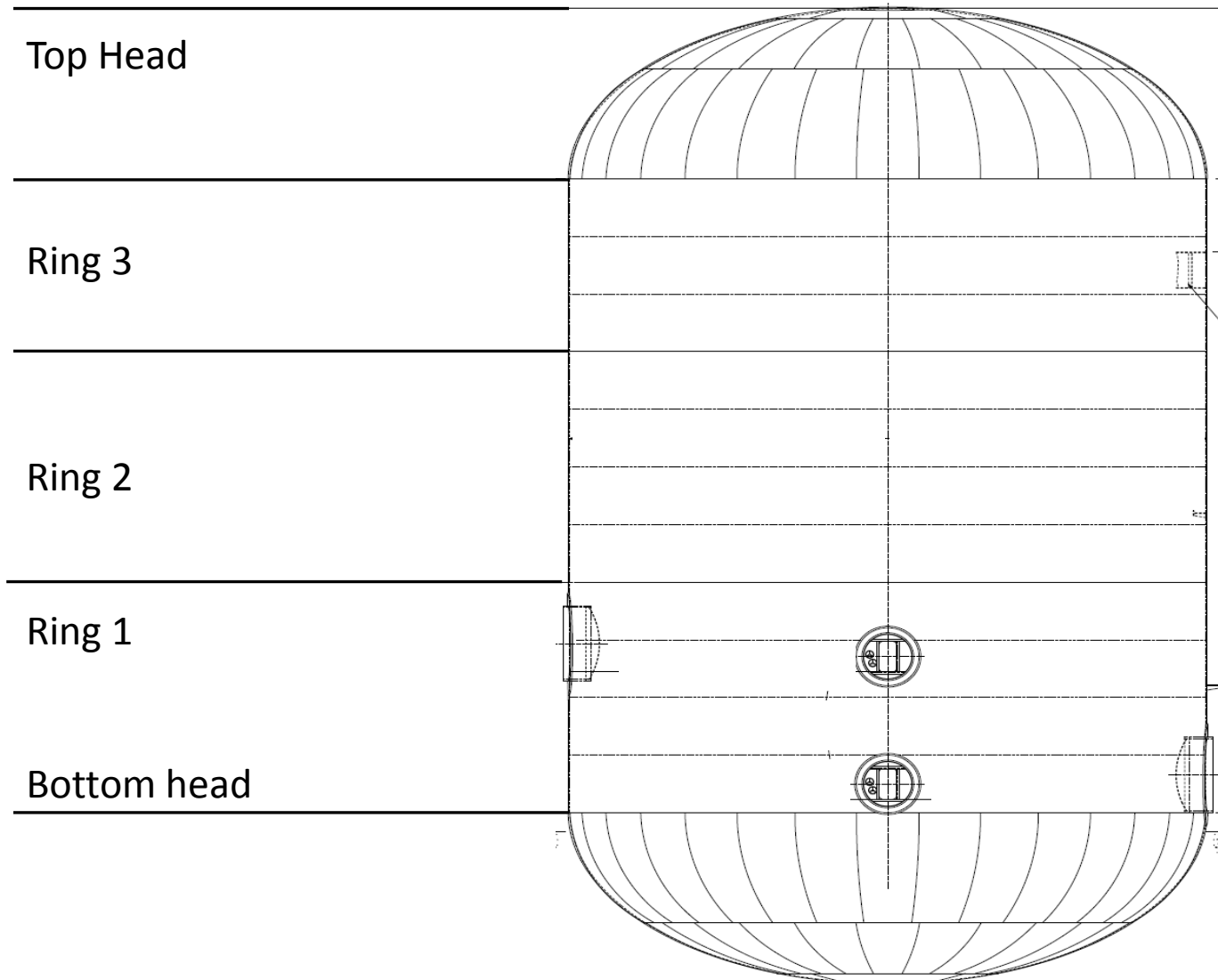


| Sanmen Unit 1 in China



**Containment
Vessel**

Containment Vessel



| Unit 2 Containment Vessel Fabrication





Unit 2 Turbine Island 1/31/2013

2A Mechanical Draft Cooling Tower





Cooling Tower 2A 2/9/13



Unit 2 Condenser 1/31/13

Limited Scope Simulator



V.C. Summer 2 & 3 Equipment Fabrication

U2 Integrated Head Package Fit-up



Integrated Head Package Lift Rig



Doosan Manufacturing Update



Unit 2 RV-Ready to Ship



Hydro test Complete for Unit 2A SG



Upper internal welding of Final Vessel for Unit 2B SG

Mangiarotti Manufacturing Update



CMT – Unit 3 Upper Pedals



ACC – Unit 2 – Tanks 1 & 2



CMT – Unit 2 Tanks 1 & 2



ACC – Unit 3 - Tank 2 – Shell to Lower Crown



Generator Rotor

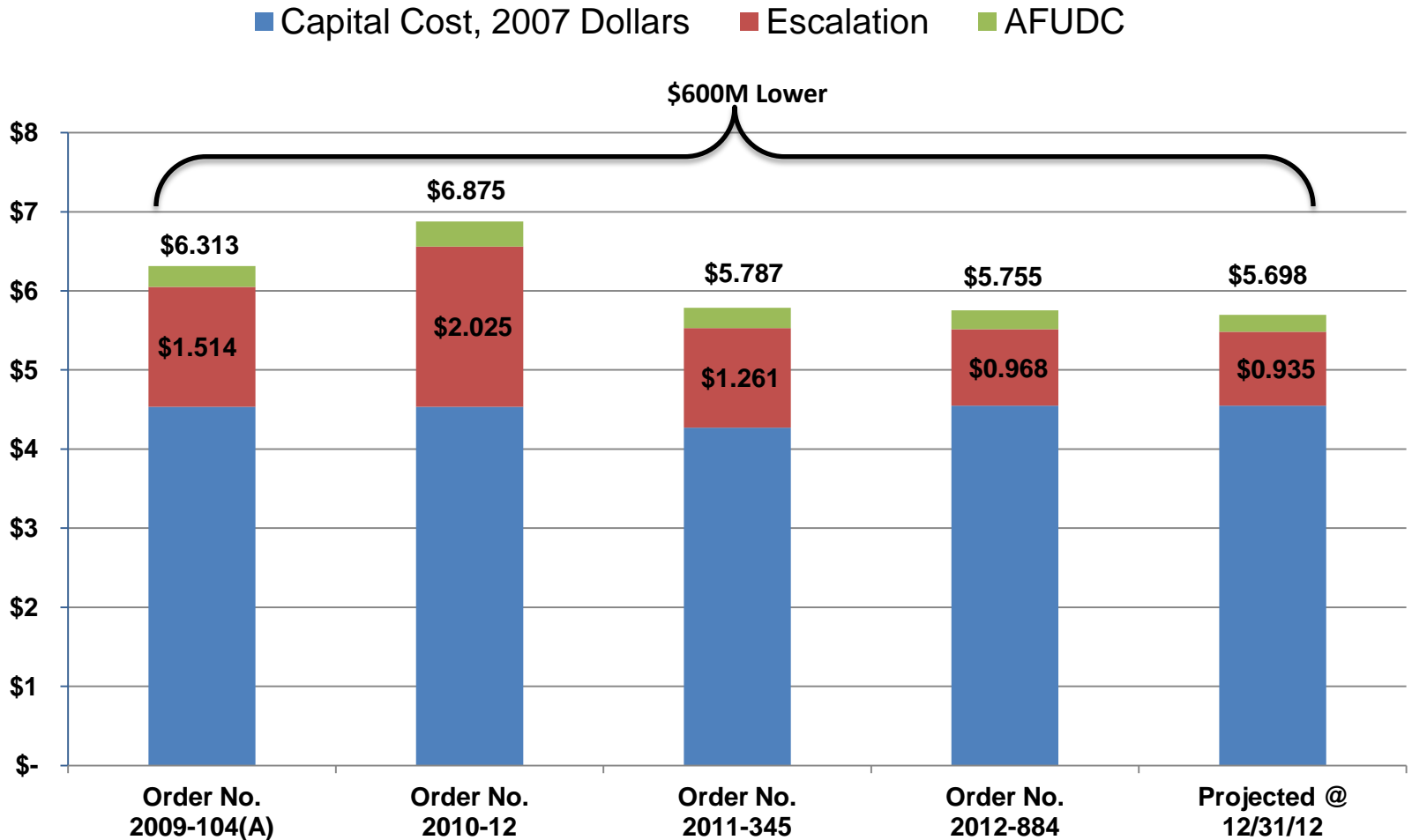


Low Pressure "A" Turbine



**Low Pressure "B" Turbine –
Prep for Blade Assembly**

New Nuclear Projected Cost (in billions)



Note: Reflects new nuclear projected costs as filed February 2013 in BLRA Quarterly Report