



U.S. DEPARTMENT OF
ENERGY

Savannah River Site

Governor's Nuclear Advisory Council

SRS Recovery Act Footprint Reduction Project

Presentation By

Helen Belencan

Recovery Act Portfolio Manager

Department of Energy

Savannah River Operations Office

June 11, 2009



Introduction

- **American Recovery and Reinvestment Act (ARRA/Recovery Act) Implementation at Savannah River Site**
- **SRS Recovery Act Footprint Reduction**
- **Accountability and Transparency**
- **Communications**
- **Footprint Reduction Project End State**

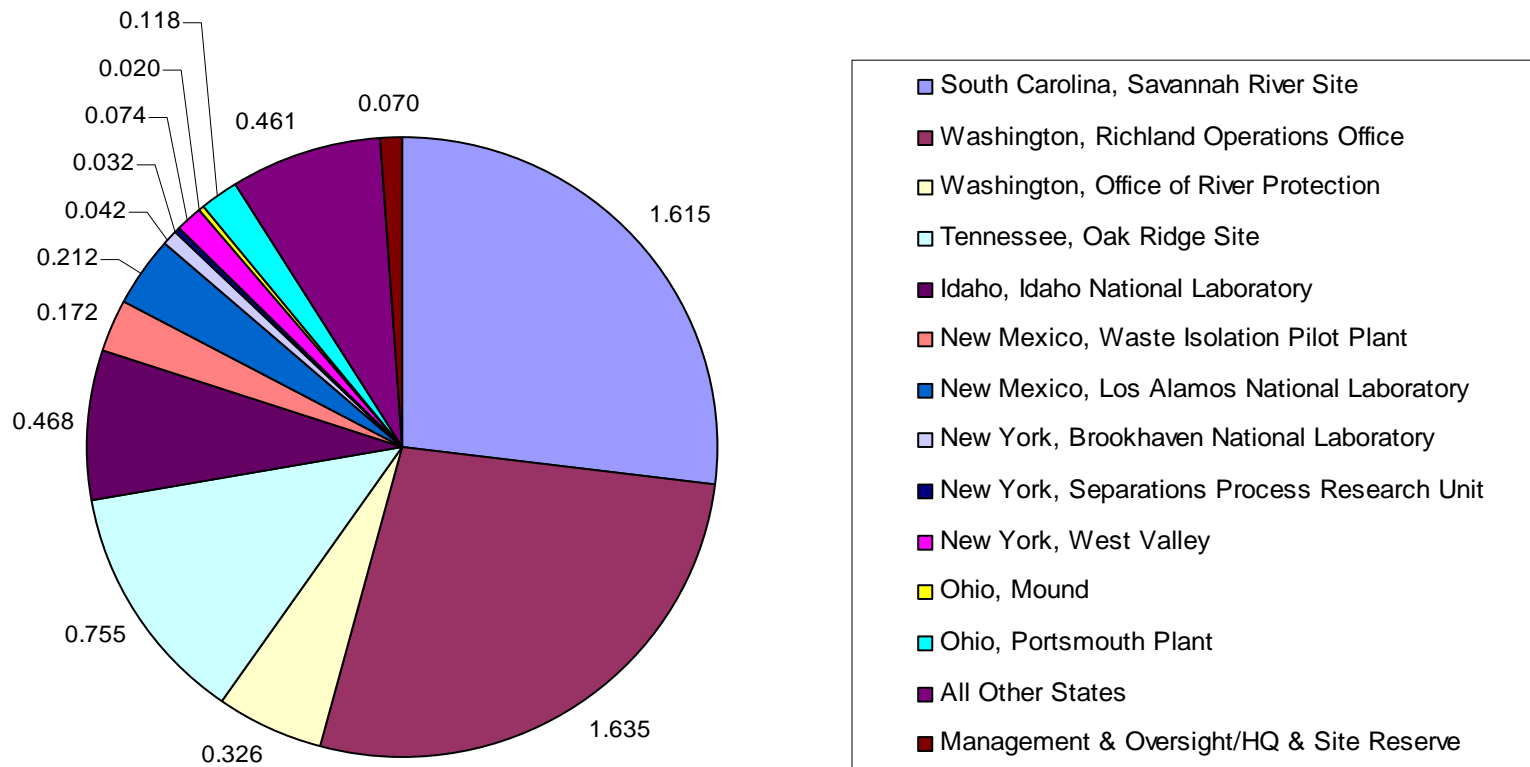


The EM Recovery Act Program

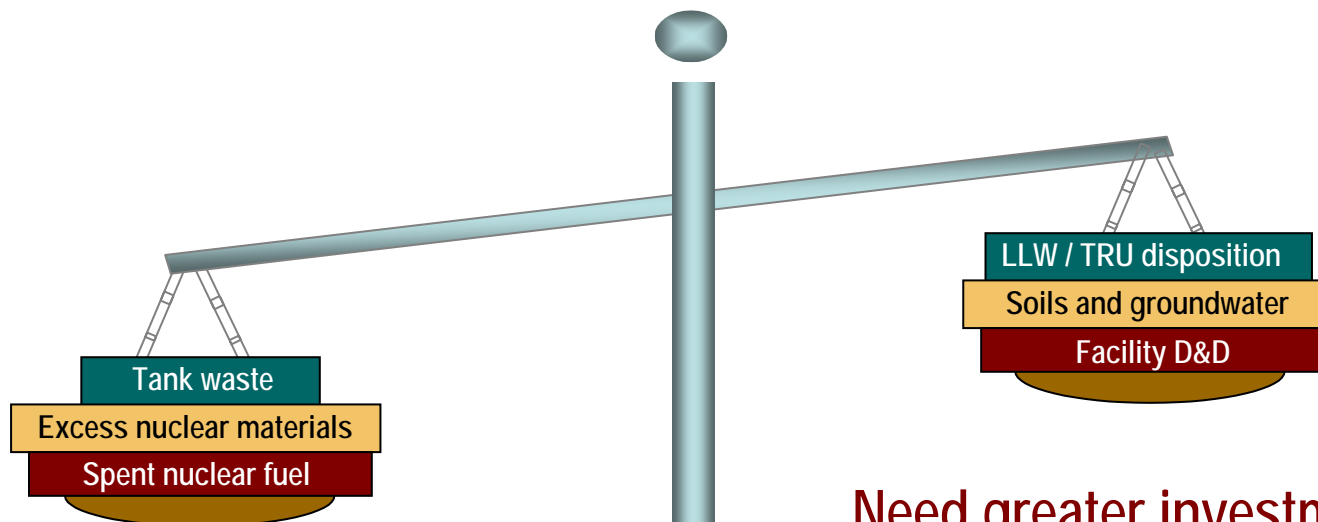
- **The Office of Environmental Management (EM) has been given an opportunity with the Recovery Act funds to accelerate and achieve new success in our Program**
- **The receipt of these funds was due to EM's ability to demonstrate programmatic results and accountability objectives**
- **The purpose of these funds is to create near-term environmental cleanup jobs with an eye toward lasting economic benefits aligned to Administration goals**
- **Clear work scope, cost estimates, and schedules must be fully defined and supported**



Distribution of \$6 Billion in Recovery Act Funding for DOE Environmental Cleanup



Cleanup Priorities



SRS missions include work that supports DOE complex – wide missions

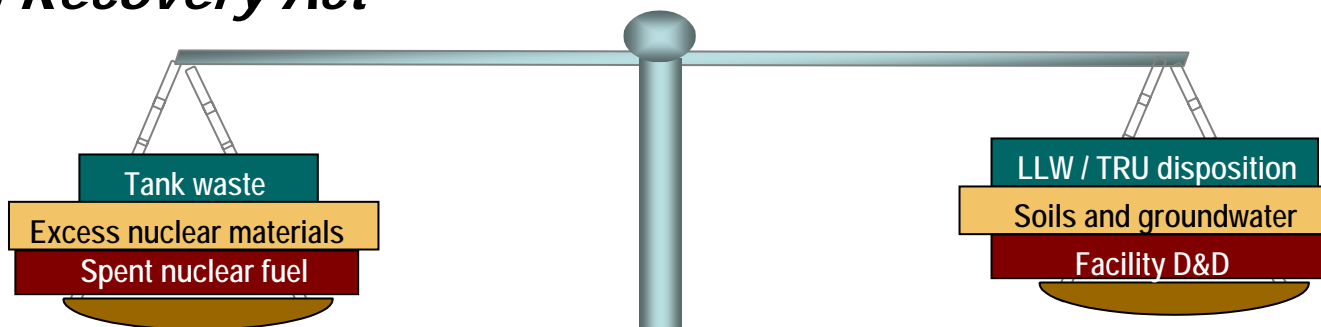
Large risk
Most challenging
Long time to completion

Need greater investment in these components



Balancing Cleanup Priorities

With Recovery Act



SRS missions include work that supports DOE complex – wide missions

Large risk
Most challenging
Long time to completion

Recovery Act investments



SRS Recovery Act Footprint Reduction

Funds Provided: \$1.615 billion

Jobs to be created/saved: ~3000

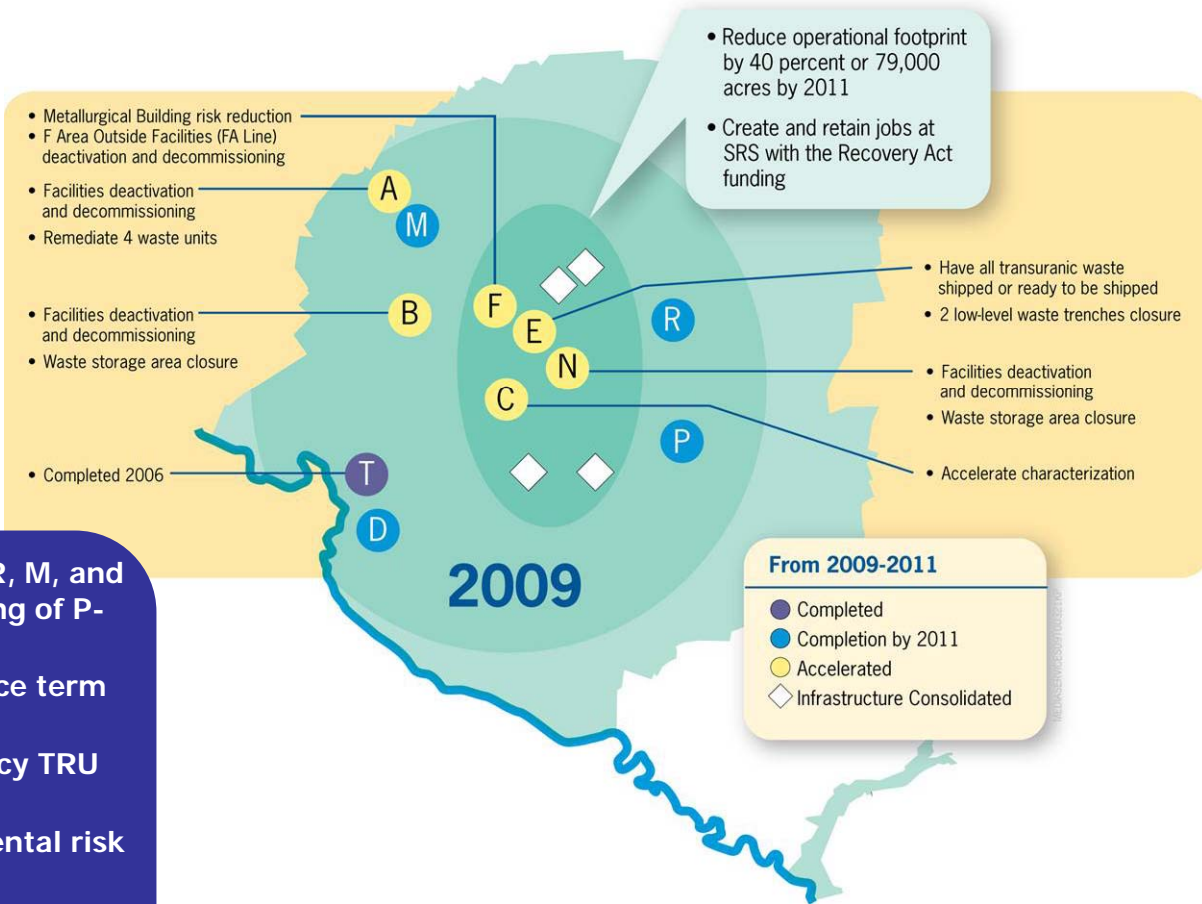
Project duration: Completion by 2011

- Reduce the EM footprint at the SRS approximately 40% by September 2011
 - Maintain the current site boundaries
- Clean up legacy of nuclear weapons production
- Enables reuse of DOE resources, including land and infrastructure



AMERICAN RECOVERY AND REINVESTMENT ACT

SRS Footprint Reduction Initiative



- Accelerate Area Completion in P, R, M, and D Areas, including decommissioning of P- and R-Reactors
- Eliminate 90% of the Pu 238 source term in 235-F
- Ship / stage / make ready all legacy TRU Waste for offsite disposal
- Ensure the reduction of environmental risk with large return on investment
- Achieve ~40% reduction of the site footprint



Project Status

- **Work is underway in all project areas**
 - Area Completion
 - Facility Decommissioning
 - Transuranic and Solid Waste Disposition
- **RH-TRU waste shipped to WIPP last week**
- **Strong track record in these project areas**
 - Decommissioned over 240 facilities representing approximately 2.5 million square feet
 - Completed over 360 of our 515 waste units
 - Shipped over 29,000 drums of TRU waste



Area Closure – P Area Completion

- **Complete deactivation and in-situ decommissioning of P Reactor**
- **Place 130,000 cubic yards of permanent grout**
 - Treat four million gallons of contaminated water from the Reactor Disassembly Basin building
- **Complete remediation of 12 contaminated areas**
 - Remediate three miles of underground process sewer lines
 - Remediate 100 acres of contaminated soils
- **Install two vadose zone remediation systems**



Area Closure – R Area Completion



- **Complete deactivation and in-situ decommissioning of R Reactor**
- **Complete grouting of the R-Reactor Disassembly Basin**
- **Complete characterization and remediation of 12 contaminated areas**
 - Remediate 120 acres of contaminated soils
- **Complete characterization and remediation of the 500-acre R-Discharge Canal**



Area Closure – D Area Completion

- **Complete closure of D Area, former site of Heavy Water Production Facilities**
- **Complete deactivation and decommissioning of D-Area Powerhouse and 30 support facilities**
- **Complete remediation of 11 contaminated areas**
 - Remediate 210 acres and 117,000 cubic yards of tritium contaminated soils and concrete
 - Remediate 30-acre volatile organic contaminated groundwater plume



Area Closure – M Area Completion

- Complete closure of M Area, former reactor fuel manufacturing area
- Complete remediation of 19 contaminated areas
 - Remediate 45 acres of contaminated soils
 - Remove all known sources to a 1,500 acre groundwater plume



Area Closure – Acceleration in Other Areas

- **Complete characterization of waste units in A Area and N Area**
- **235-F stack and removal of 90% of Pu-238 source term**
- **Decommission facilities:**
 - Heavy Water Components Test Reactor
 - A-Line Facility in F-Area
 - Consolidated Incineration Facility
 - A Area facilities, including 703-A
 - K-Area Powerhouse, K-Cooling Tower, and other excess K-Area facilities
 - 645-N, 690-N, and 728-N



Waste and Material Disposition

- **Disposition approximately 4,500 cubic meters of legacy transuranic waste presently in inventory at SRS**
 - Waste will either be shipped or characterized for offsite shipment to WIPP (TRU waste) or NTS (treated MLLW)
- **Consolidate all RCRA hazardous waste storage operations to E Area, and close other facilities**
- **Disposition 16,000 drums of depleted uranium oxide**



Accountability and Transparency Regulatory Agency Involvement

- Air, Water, and RCRA Permit planning / processing
- FFA & STP
- Process modifications
 - Accelerated review schedules
 - Co-location
- End State planning



Communications

- www.srs.gov/recovery
- **Internal SRS employee communications**
- **Regularly scheduled meetings**
 - Regulators (SCDHEC, EPA, etc...)
 - Economic Development Organizations
 - Editorial board meetings
 - Business leaders in the CSRA
 - Government
- **Job Fairs**



The Opportunity Ahead

- **Demonstrate our ability to deliver**
 - Conduct work safely
 - Meet commitments
 - Reduce lifecycle cost
 - Clear the way for future missions at SRS
- **Maintain perspective**
 - Nuclear materials and liquid waste remain high priority projects

