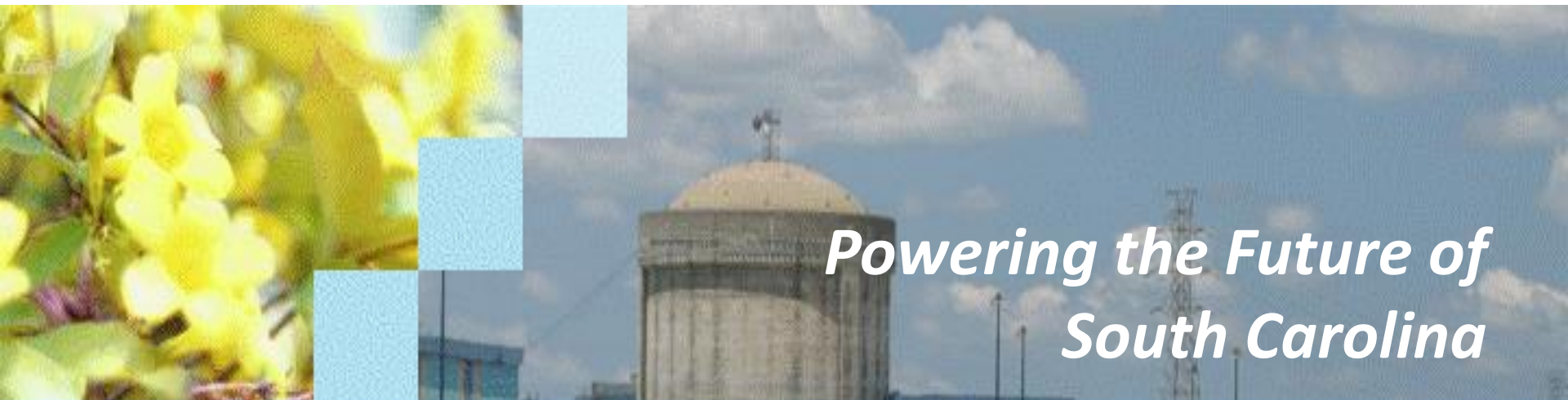


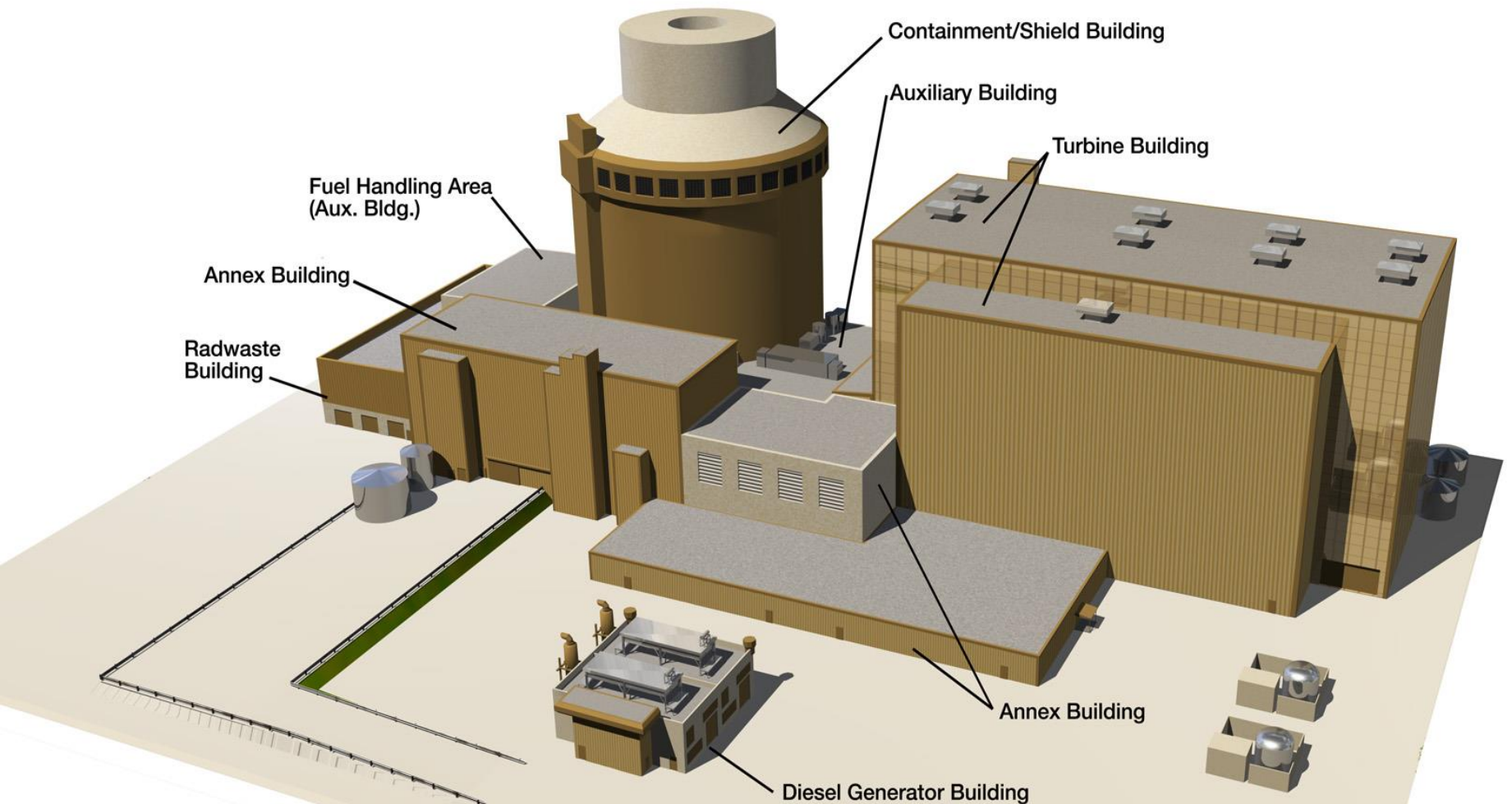
New Nuclear Update March 2012



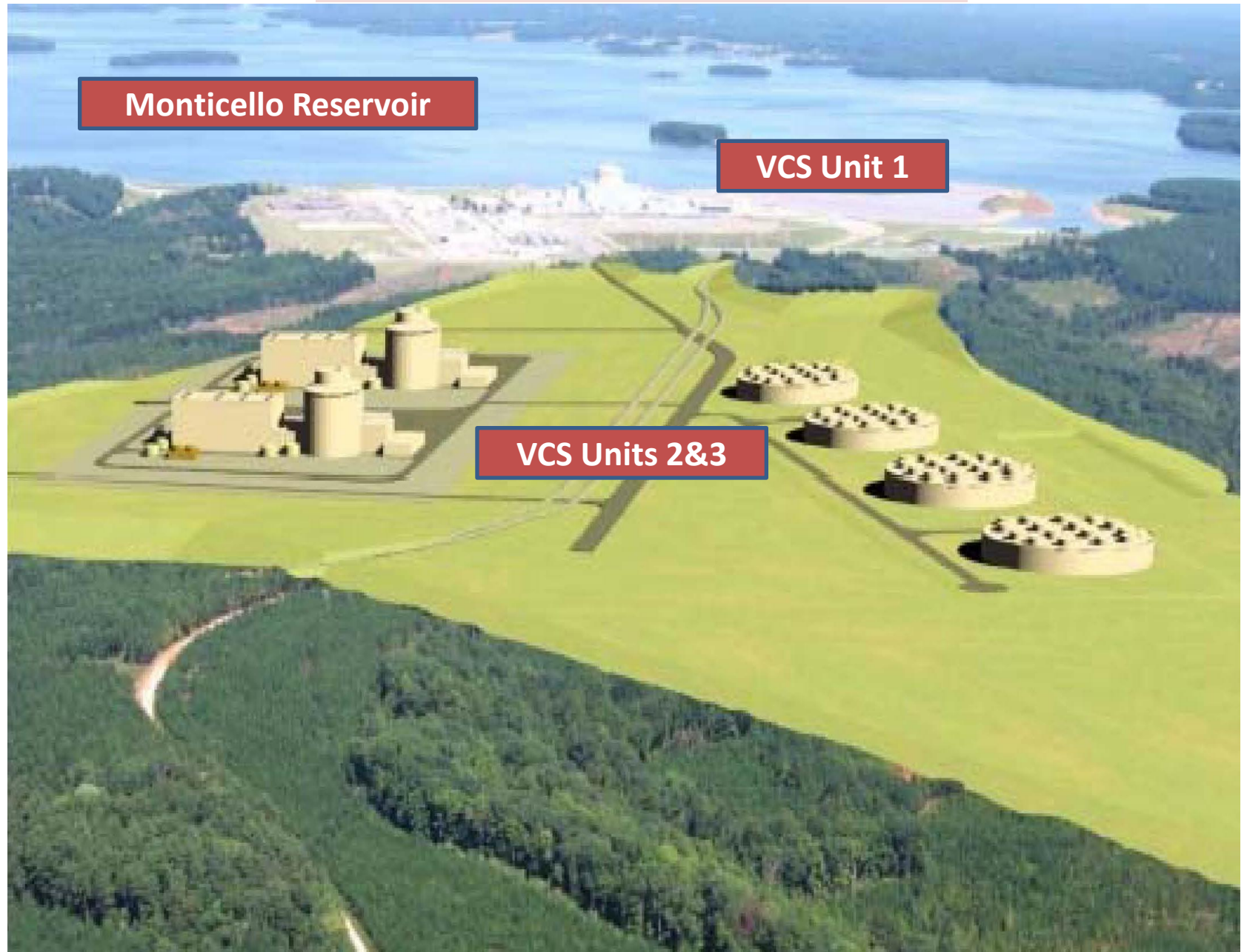
*Powering the Future of
South Carolina*



The Westinghouse AP1000™



VC Summer Site



Monticello Reservoir

VCS Unit 1

VCS Units 2&3

What's Going on at the Site

- Completing worlds largest derrick (crane)
- Installing simulators
- Fabricating CV lower bowl
- Erecting switchyard
- Erecting cooling towers

Colleges & Universities Supporting

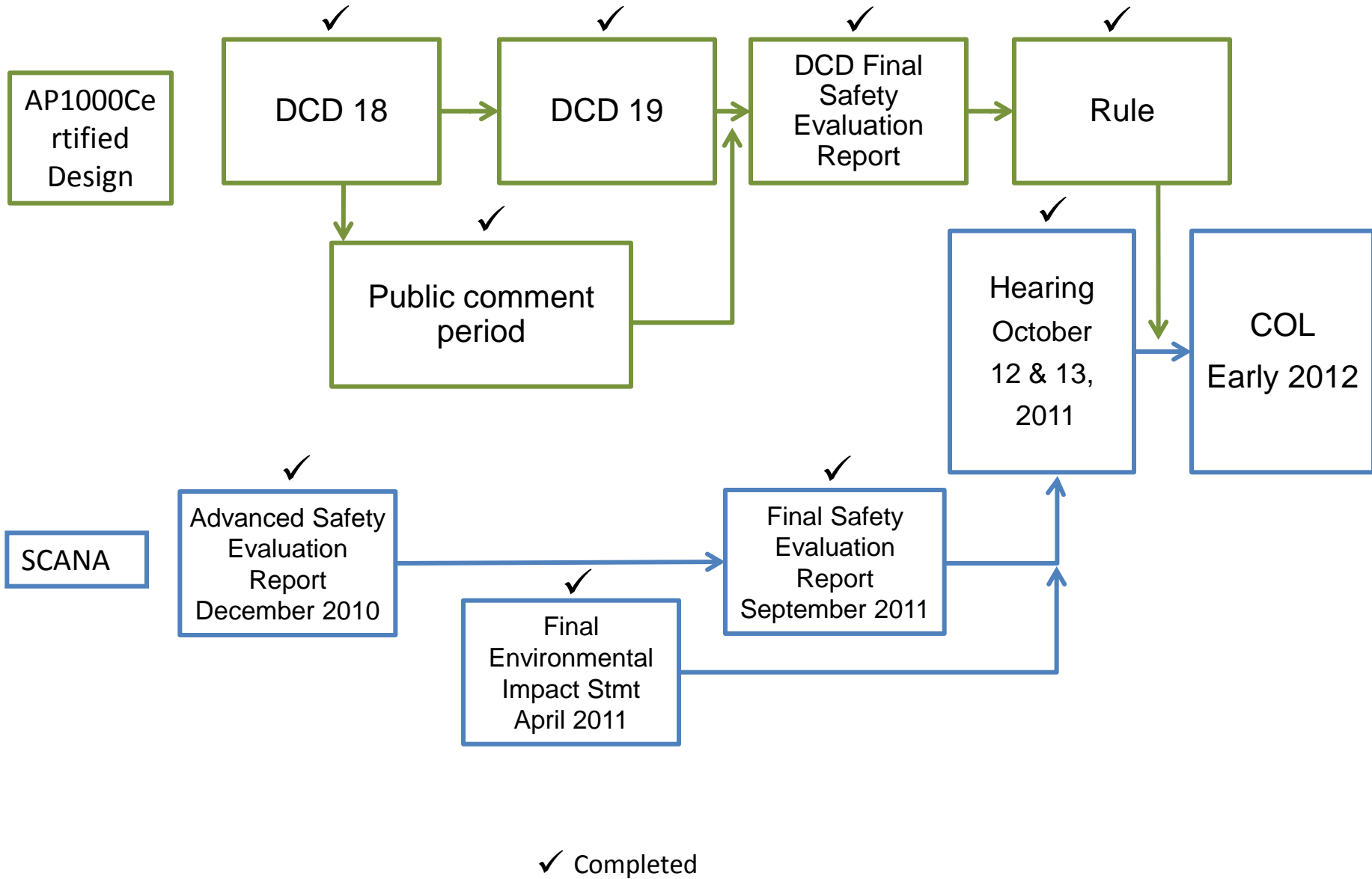
- Midlands Tech, Aiken Tech, Spartanburg Community College, O-C Tech and York Tech programs for I&C, health physics, mechanical maintenance, Operators and electrical maintenance
- Clemson, S.C. State, Francis Marion and USC have internship programs for health physics and engineering



accept the challenge



NRC Parallel Path Chart



So Where is our COL?

- With the 5 Commissioners
- Nothing else required from SCE&G
- Vote in private
- Affirmation session, 7 day notice period



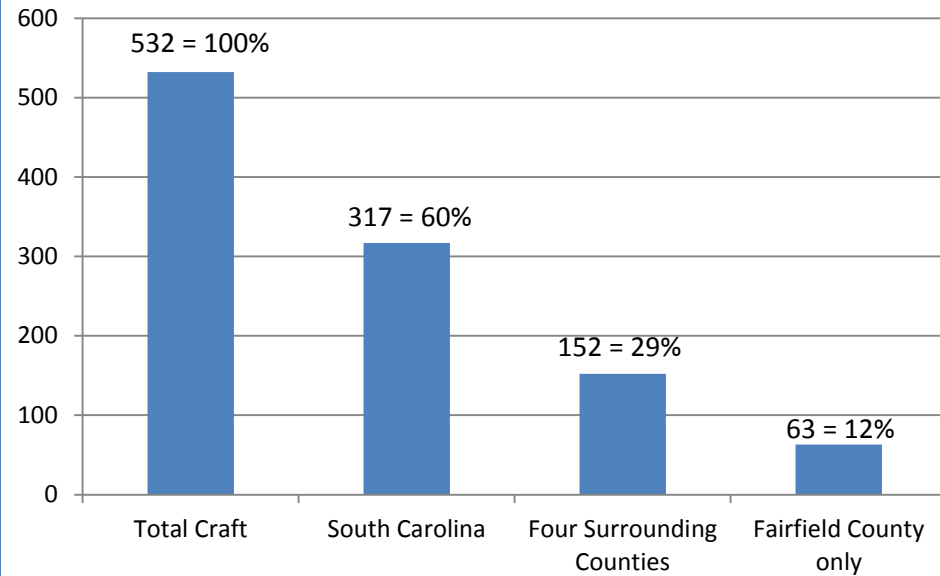
Craft and Sub Demographics

November 2011

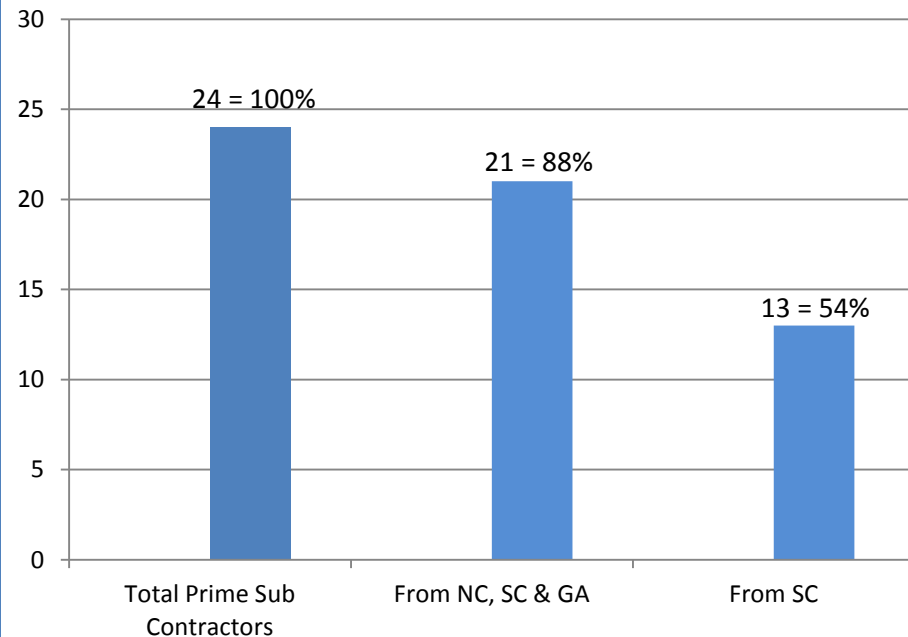
By Count & Percent of Total

Four Surrounding SC counties:
Fairfield, Lexington, Richland, Newberry Counties

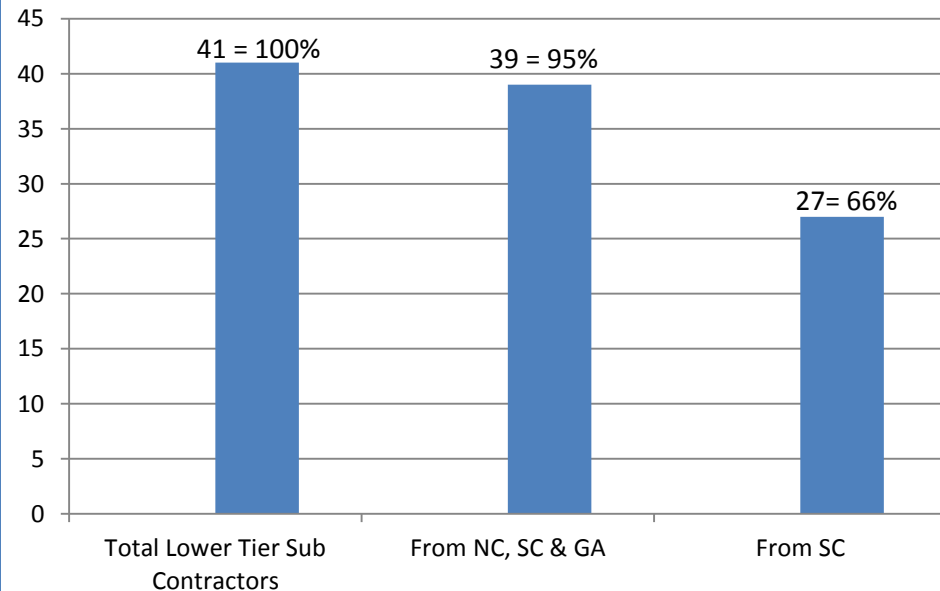
November 2011 Craft Demographics



November 2011 Prime Sub Contracts



November 2011 Lower Tier Sub Contractors



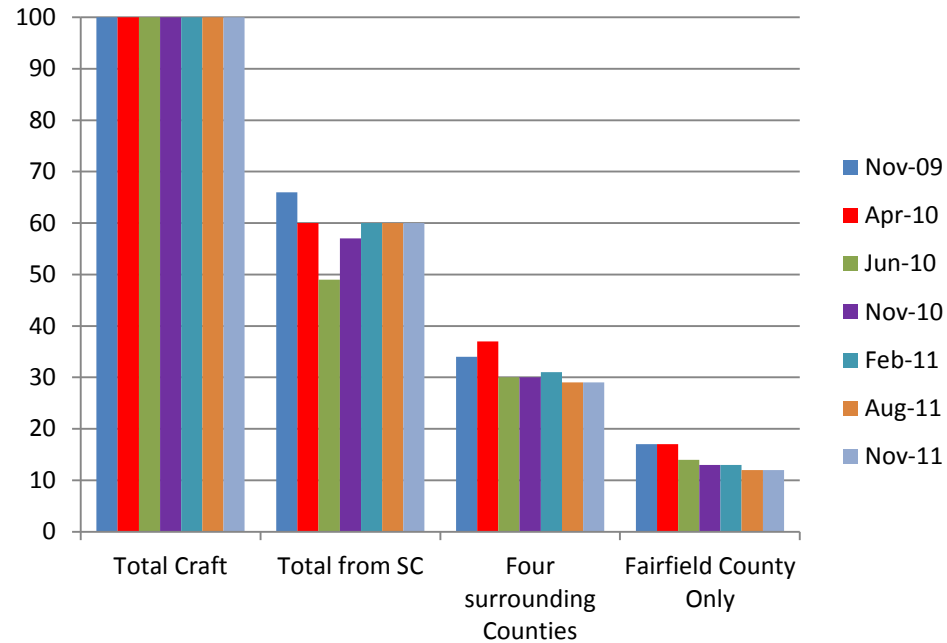
Craft and Sub Demographics

Historical

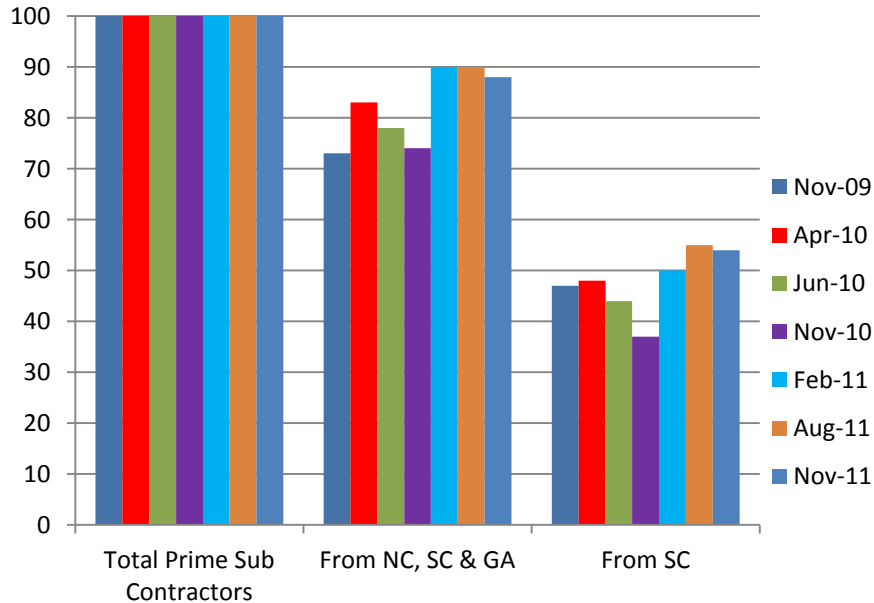
Trends by Percent

Four Surrounding SC counties:
Fairfield, Lexington, Richland, Newberry Counties

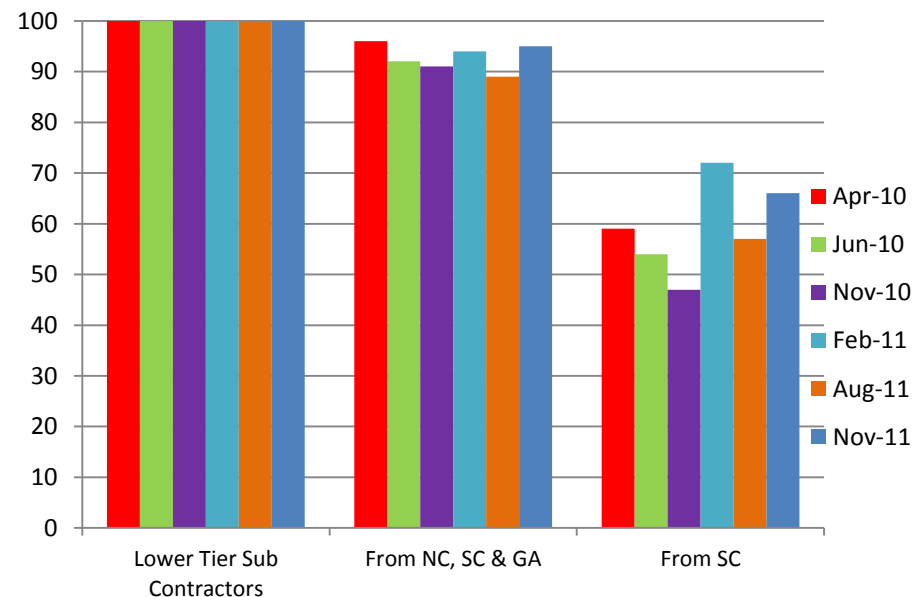
Compliance of Craft Demographics = %



Compliance of Prime Sub Contracts Data = %



Compliance of Lower Tier Sub Contracts



New Plant Site - Aerial View



Site Aerial
Oct 2011



| Aerial View- October 2011





**Contractor
Parking**



**Concrete
Batch Plants**





Switchyard



09/07/2011 09:05 AM

Switchyard





02. 09.12 Unit 2 Formwork and Rock Cleaning



02. 09.12 CBI Bottom Head Vessel



02.09.12 CR10



02. 09.12 CA-01



**CA20_01 & CA20_02
Sized Mockup**

10/18/2011 03:51



10/26/2011 11:21 AM

10.26.11
Module
Mock-up





02. 09.12 Cooling Tower 2A



02. 09.12 CWS Piping

Setting Unit 2 CWS to the Pump House



10/20/2011 12:59 PM

BIGGE Heavy Lift Derrick (HLD)

Pendant lines

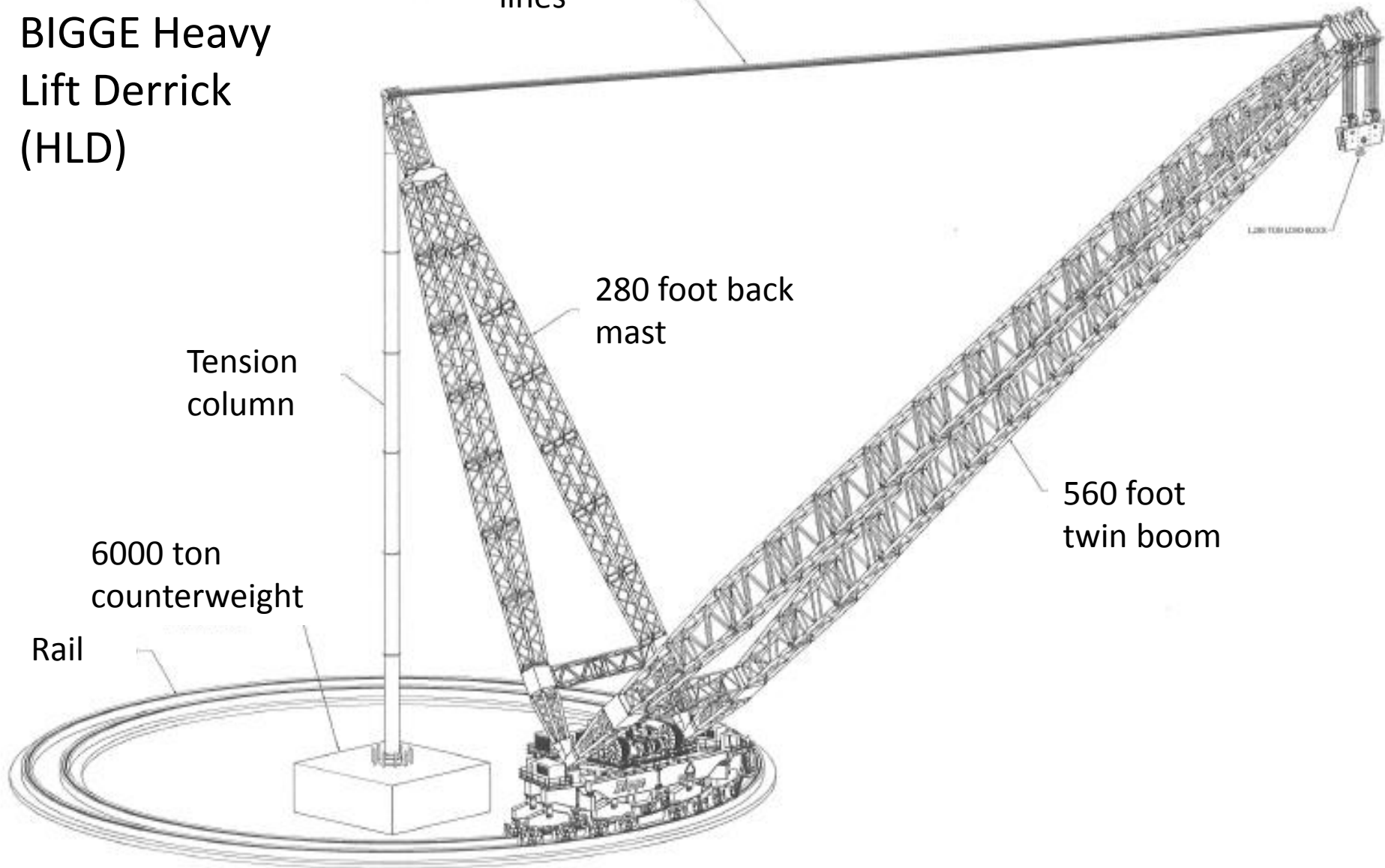
280 foot back mast

Tension column

560 foot twin boom

6000 ton counterweight

Rail

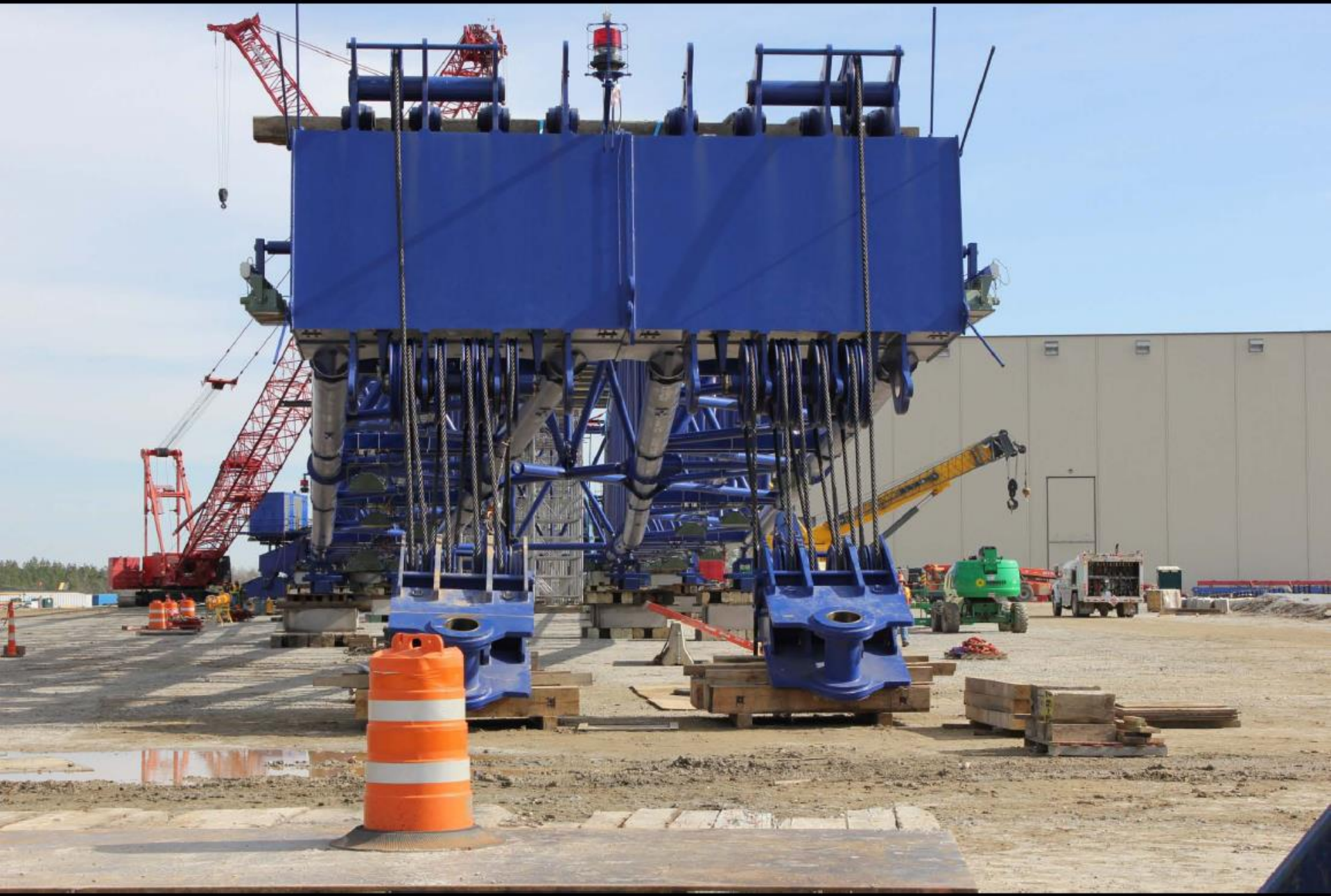


HLD Front Boom
560 ft





2.22.12 HLD Erection, CBI Vessel Head



1.19.12 Cable Reeving for HLD

Limited Scope Simulator



Containment Vessel Bottom Head (CVBH)

Sanmen Unit 2
June 13, 2010

38 ft tall
130 ft diameter
650 tons

Images are copyrighted and are courtesy of Westinghouse Electric
Company, LLC

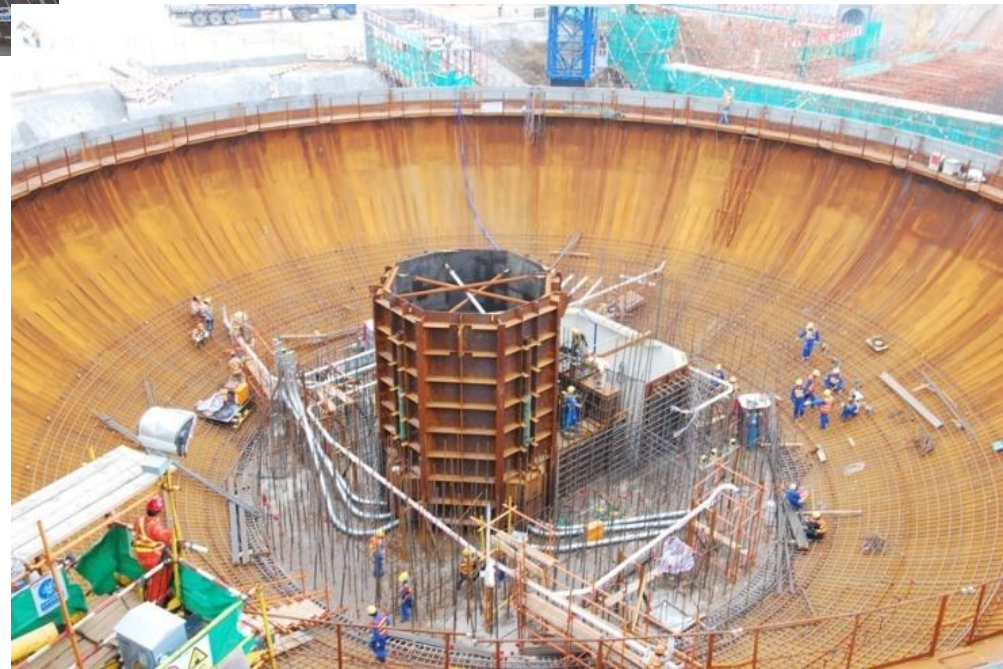


CA04 (Reactor Cavity)



Sanmen Unit 1
January 26, 2010

Haiyang Unit 1
May 2010



Sanmen Unit 2 CA04 – July 20, 2010
Haiyang Unit 2 CA04 – November 30, 2010

CA01 (Steam Generator & Refueling Canal Module)



Sanmen Unit 1
March 27, 2010

Haiyang Unit 1 CA01– July 31, 2010
Sanmen Unit 2 CA01– August 13, 2010
Haiyang Unit 2 CA01 – January 31, 2011

Images are copyrighted and are courtesy of Westinghouse Electric Company, LLC

Sanmen Lifting 2nd CV Ring into Place



Images are copyrighted and are courtesy of Westinghouse Electric Company, LLC

Sanmen January 2012



Final Points

- Pre-construction / fabrication at the site is progressing well
- Project is staffed and ready for start of construction upon issuance of COL
- COL expected early in 2012
- NRC Fukushima requirements will be met
- No supply chain in Japan expected due to Japanese earthquake/tsunami
- China making good progress

Questions?

